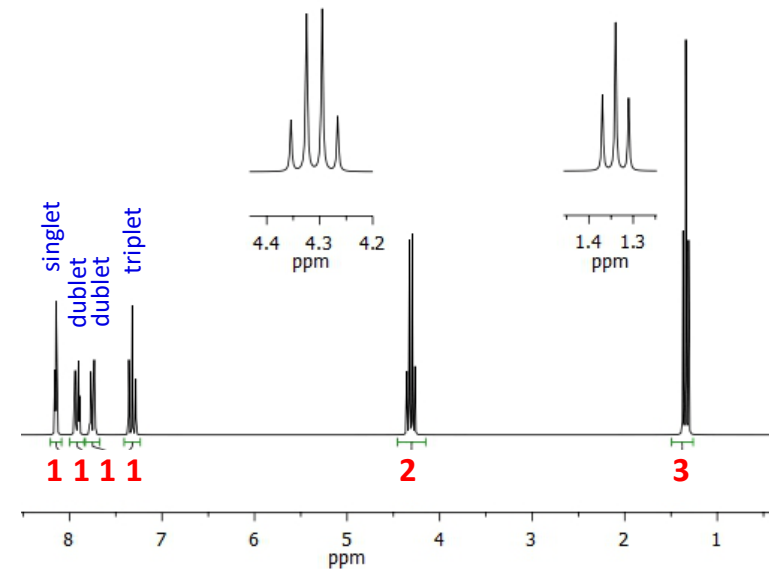
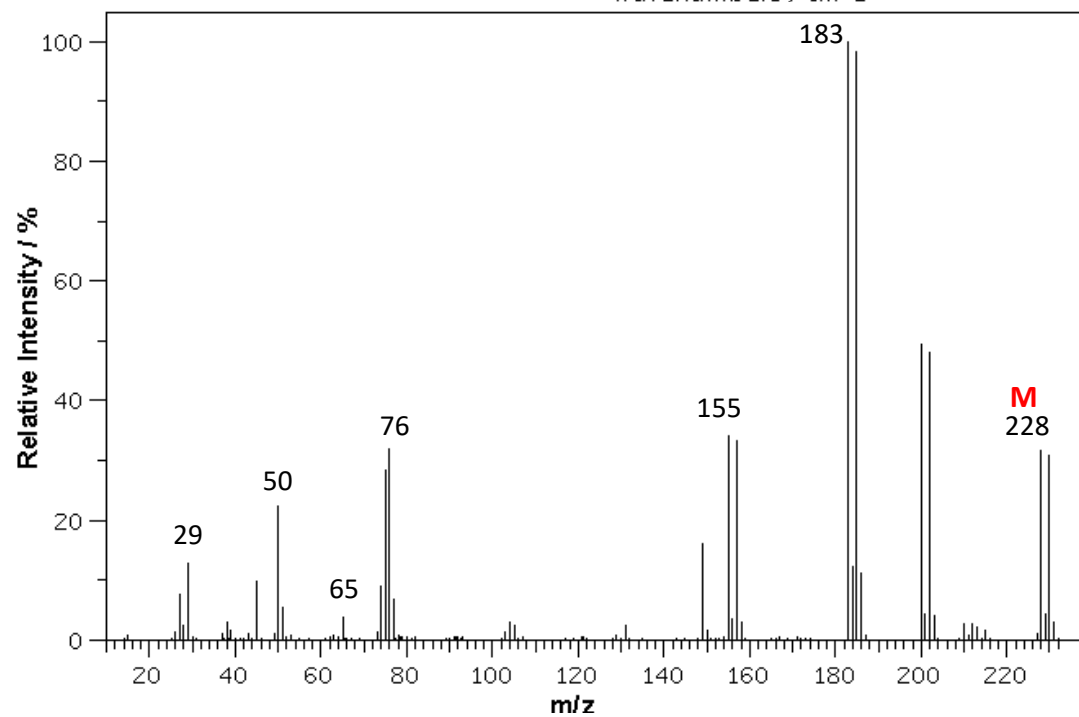
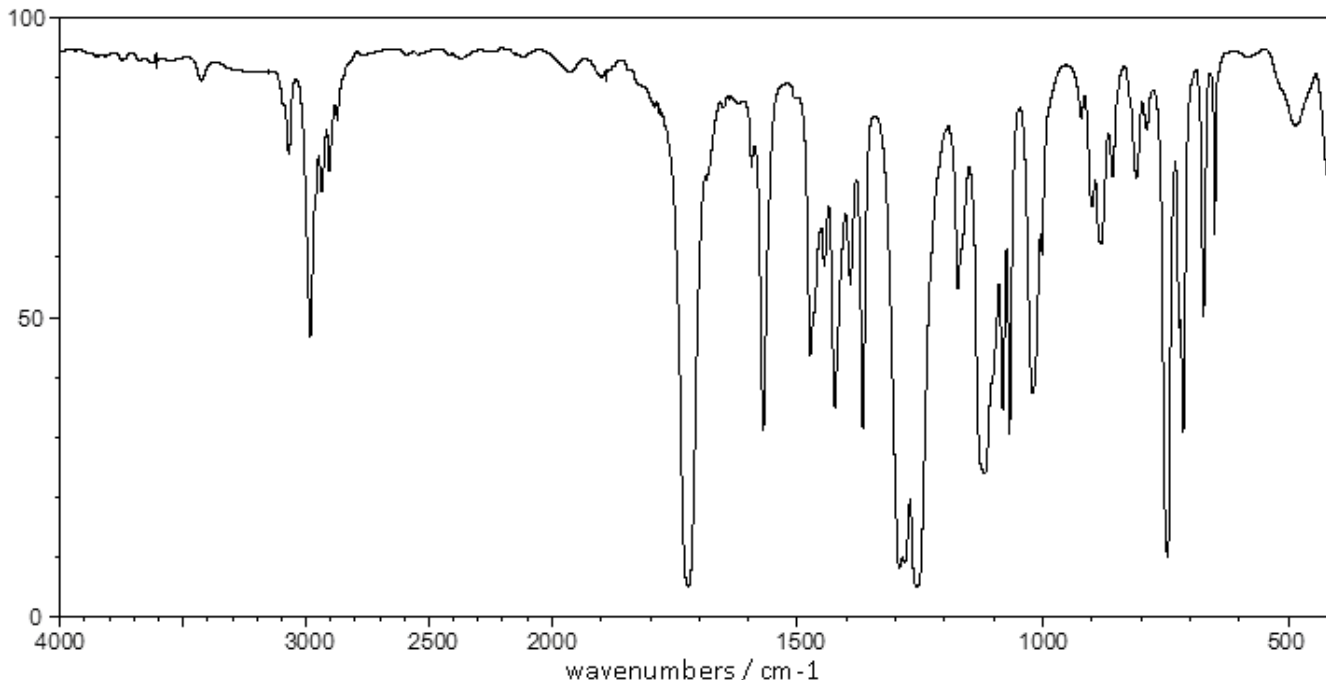
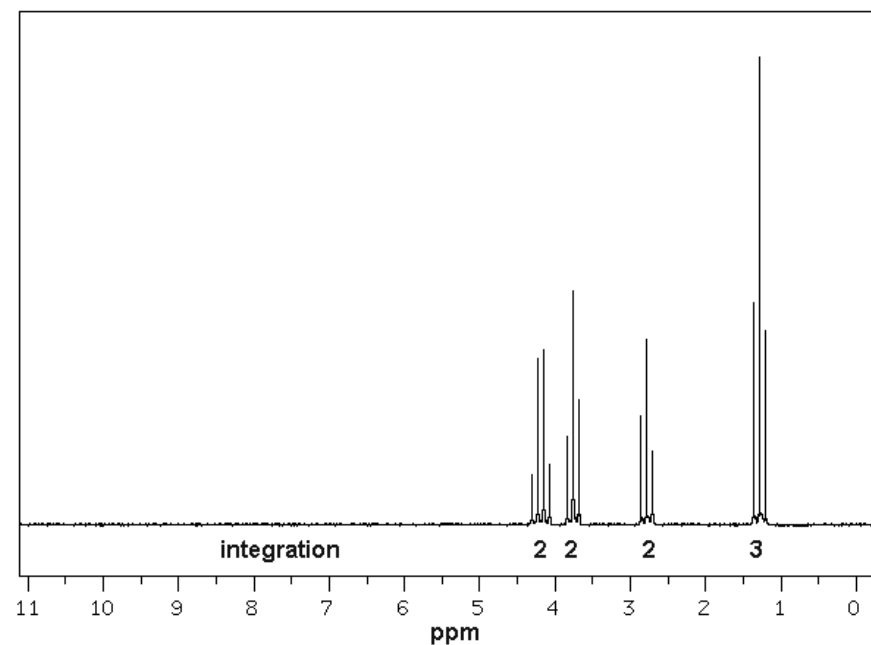
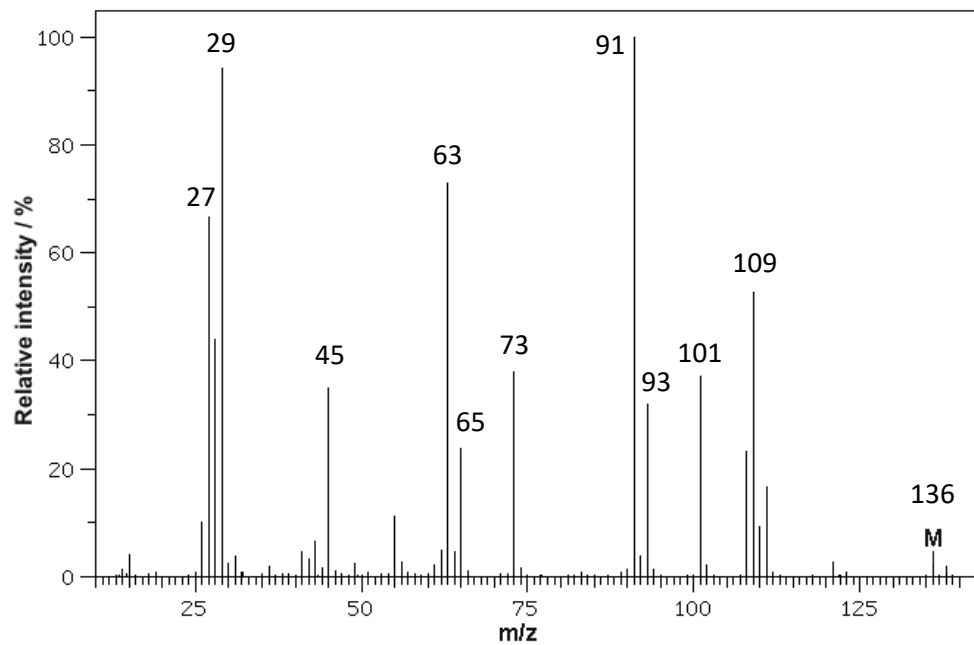
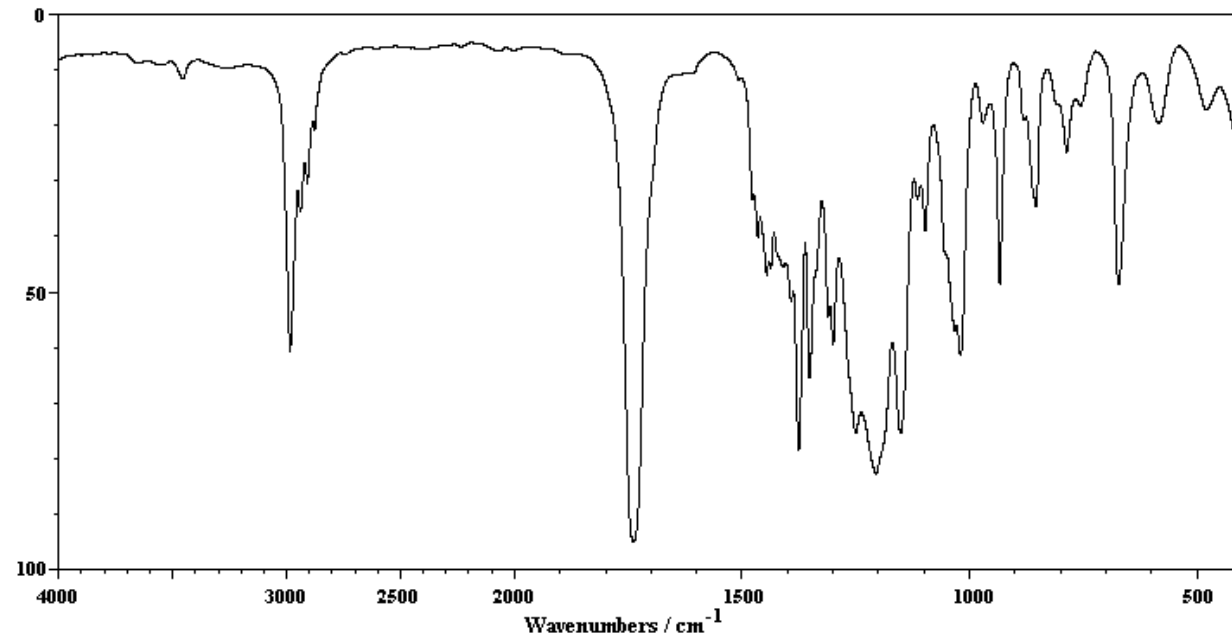


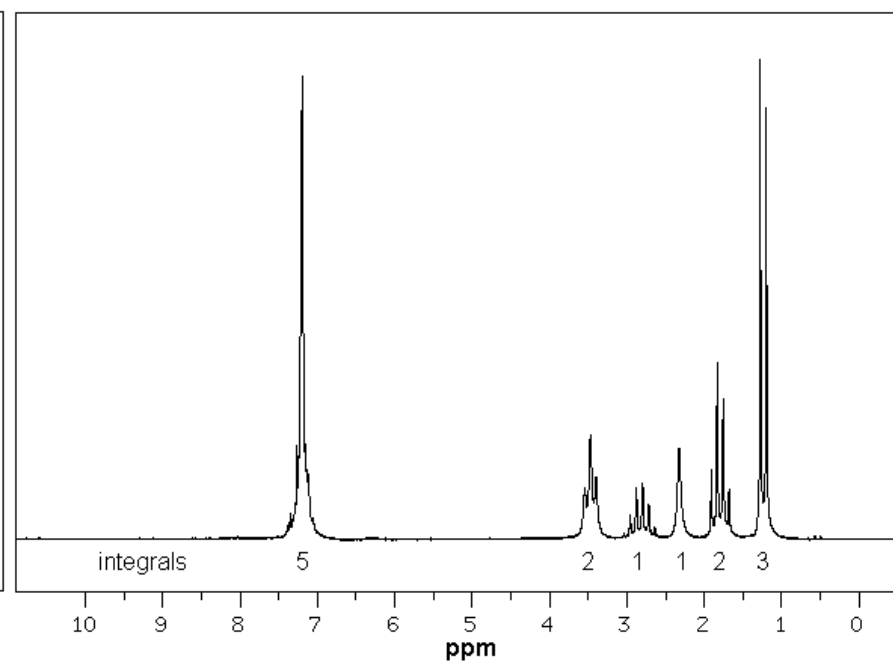
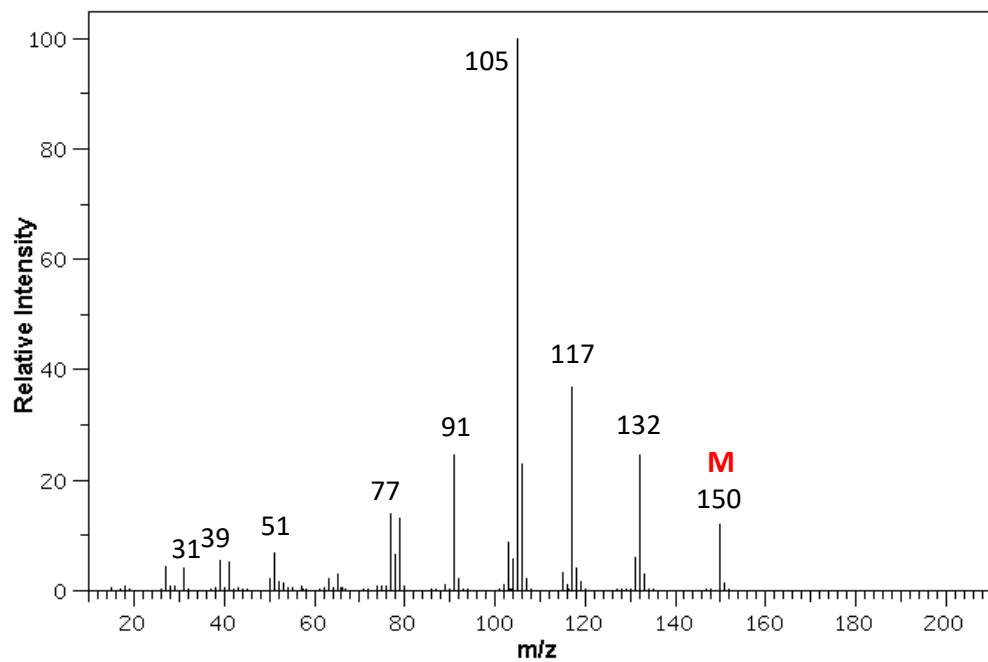
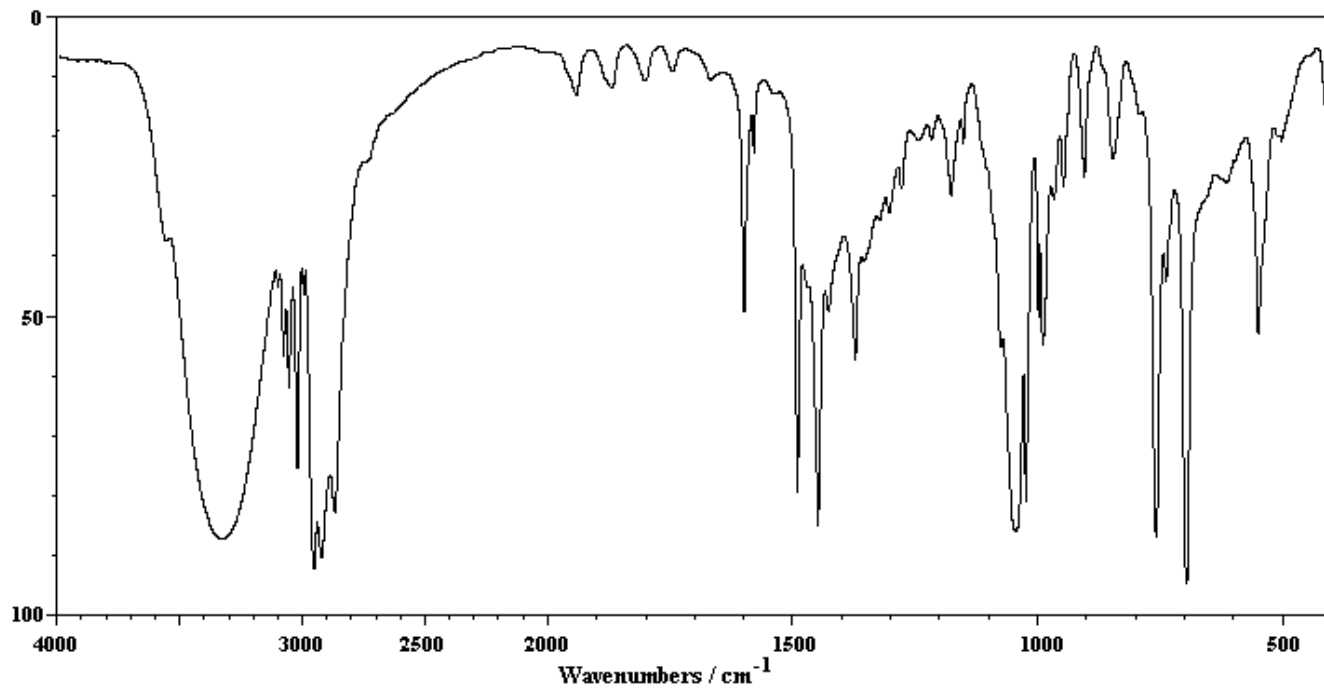
# Příklad 1



Absorbance / %

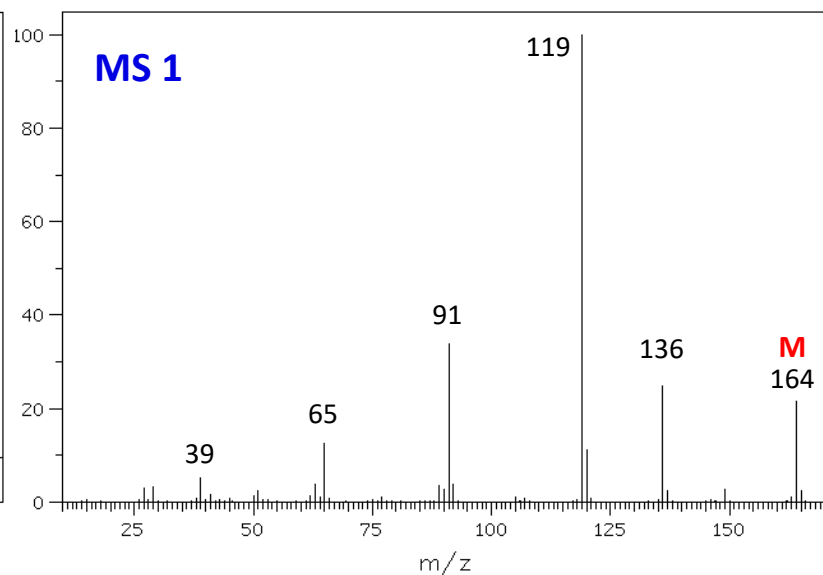
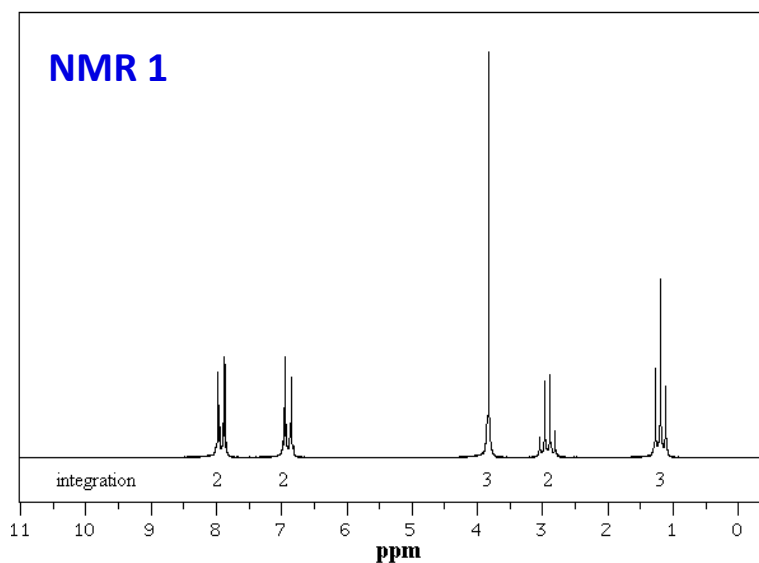
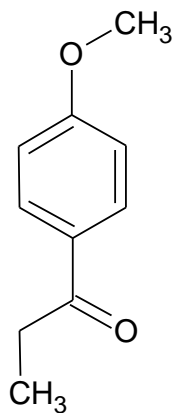


# Příklad 3

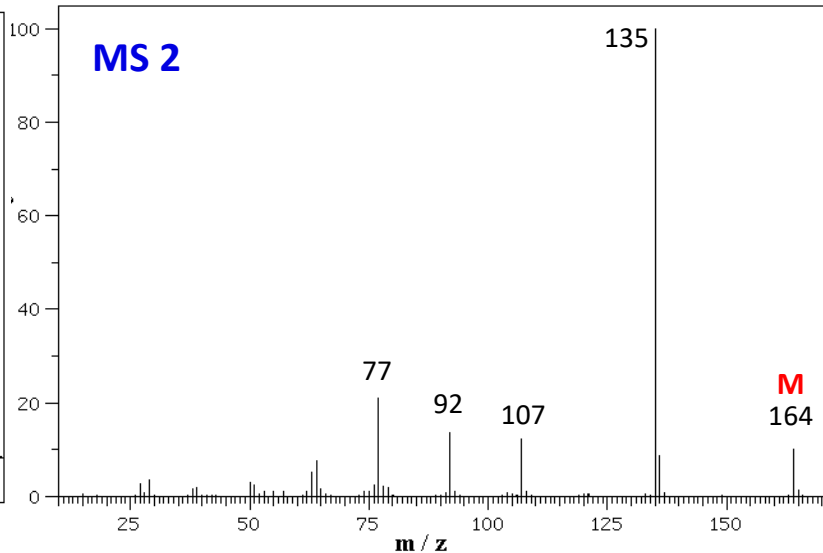
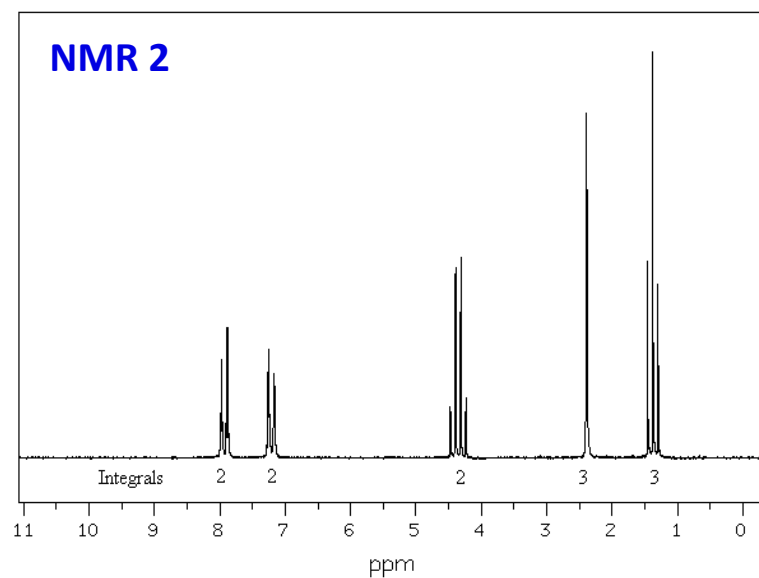
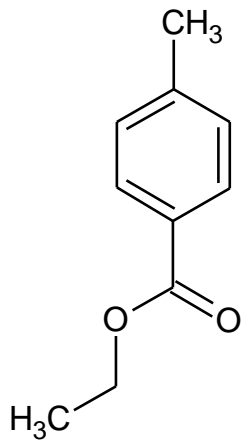


**Příklad 4** Máme látky A a B se stejnou molekulovou hmotností, jejichž strukturní vzorce jsou uvedeny na obrázcích. Dále máme dvě NMR a dvě hmotnostní spektra. Přiřaďte tato spektra látkám A a B. Své rozhodnutí zdůvodněte.

**Látka A**

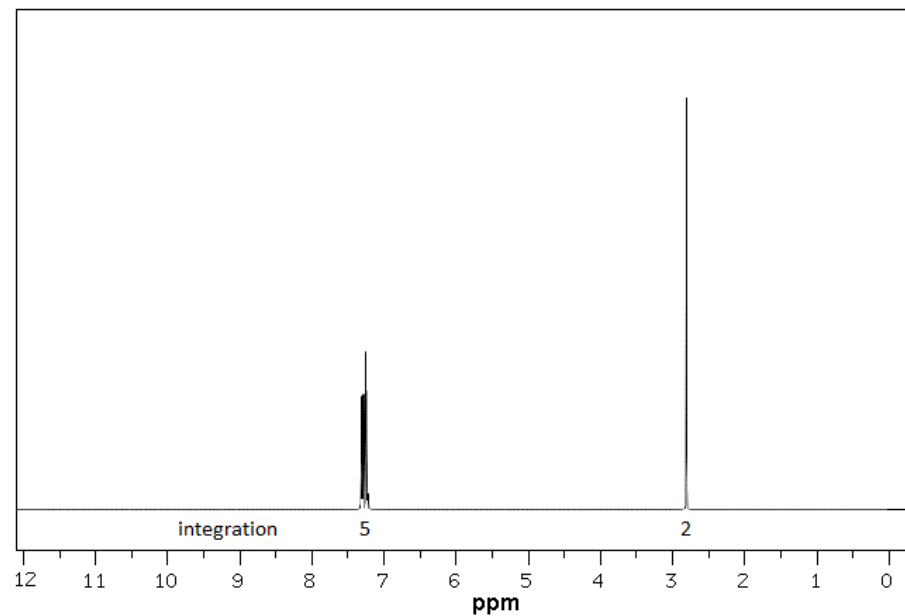
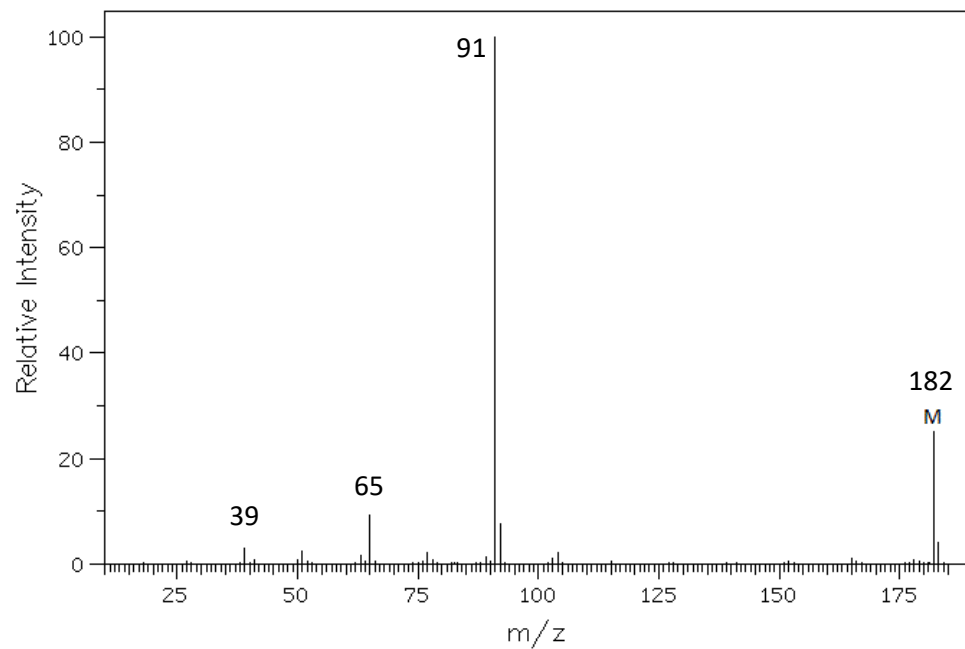
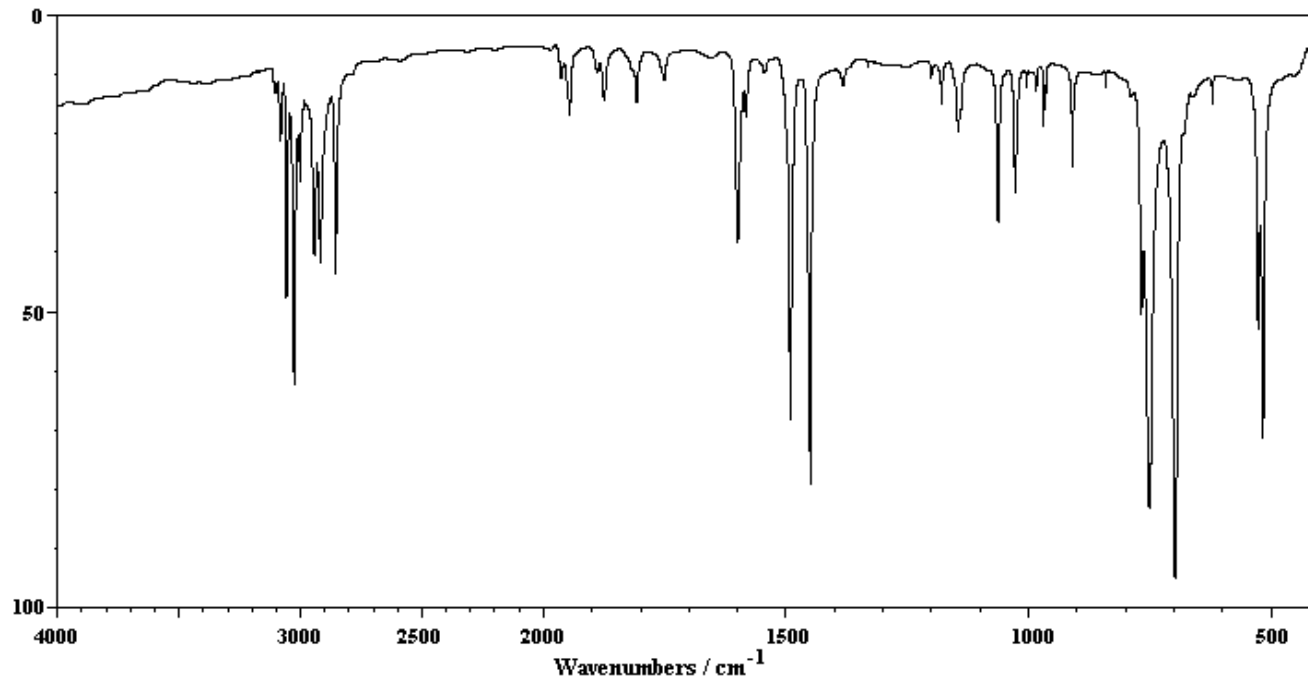


**Látka B**

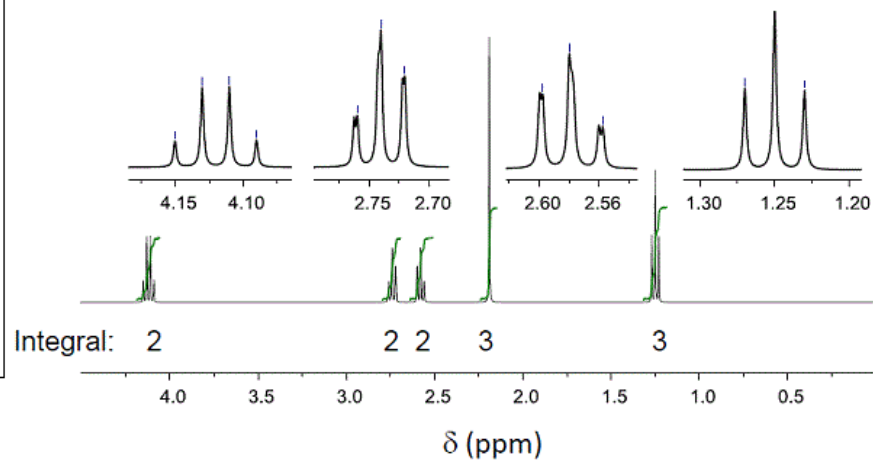
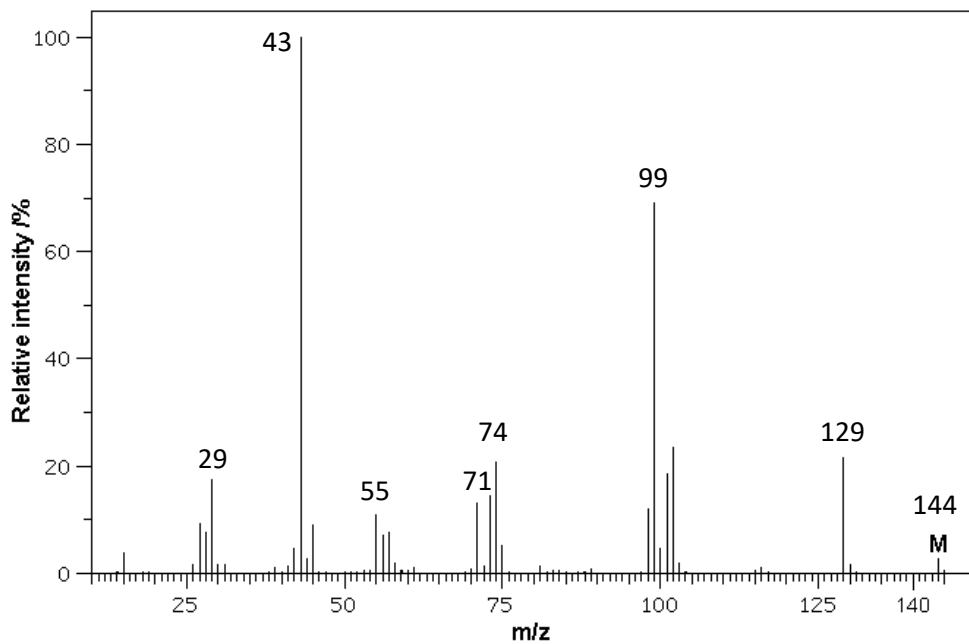
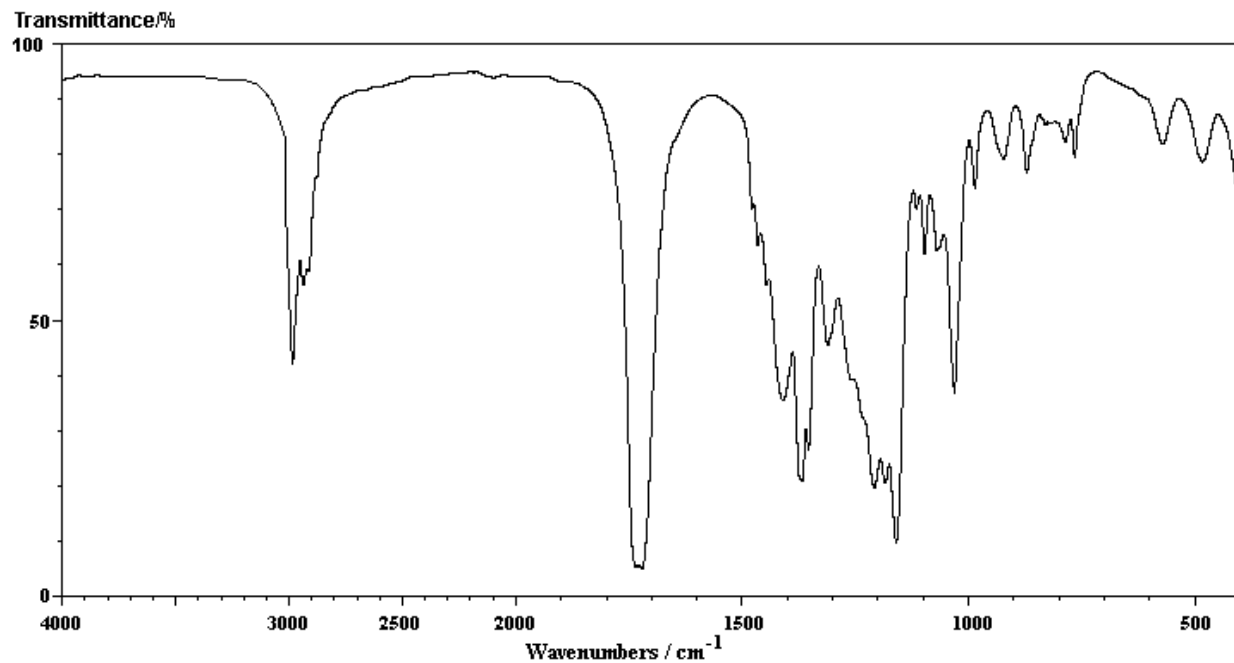


# Příklad 5

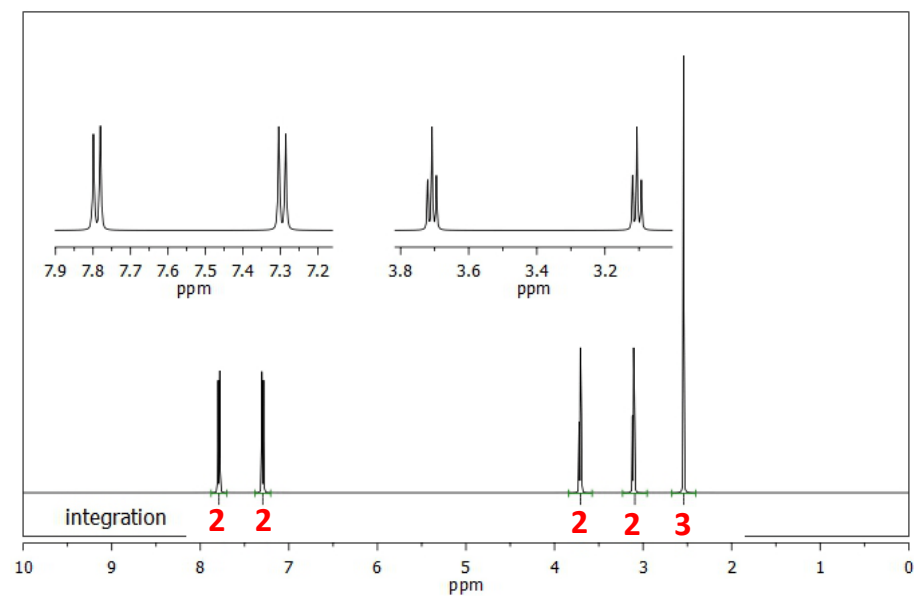
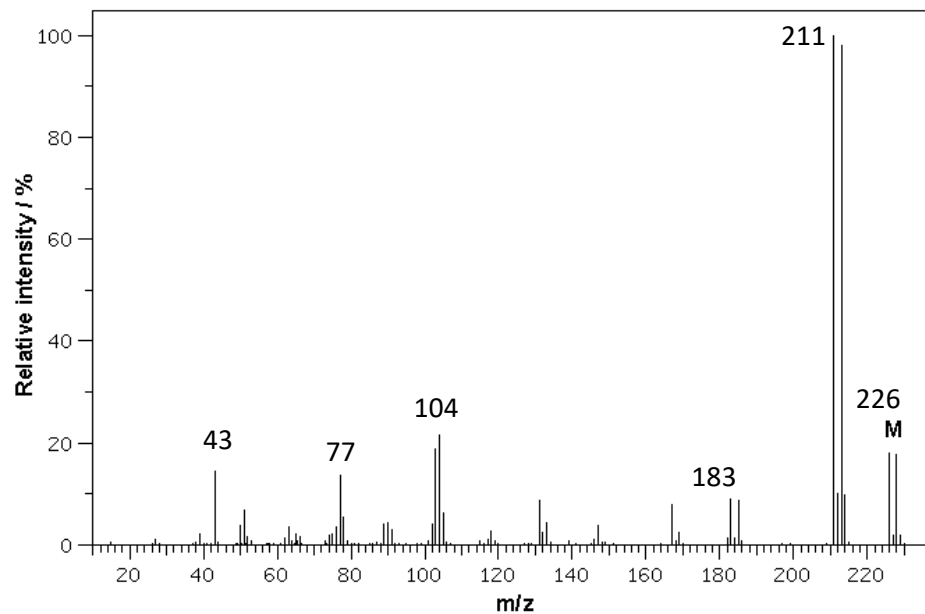
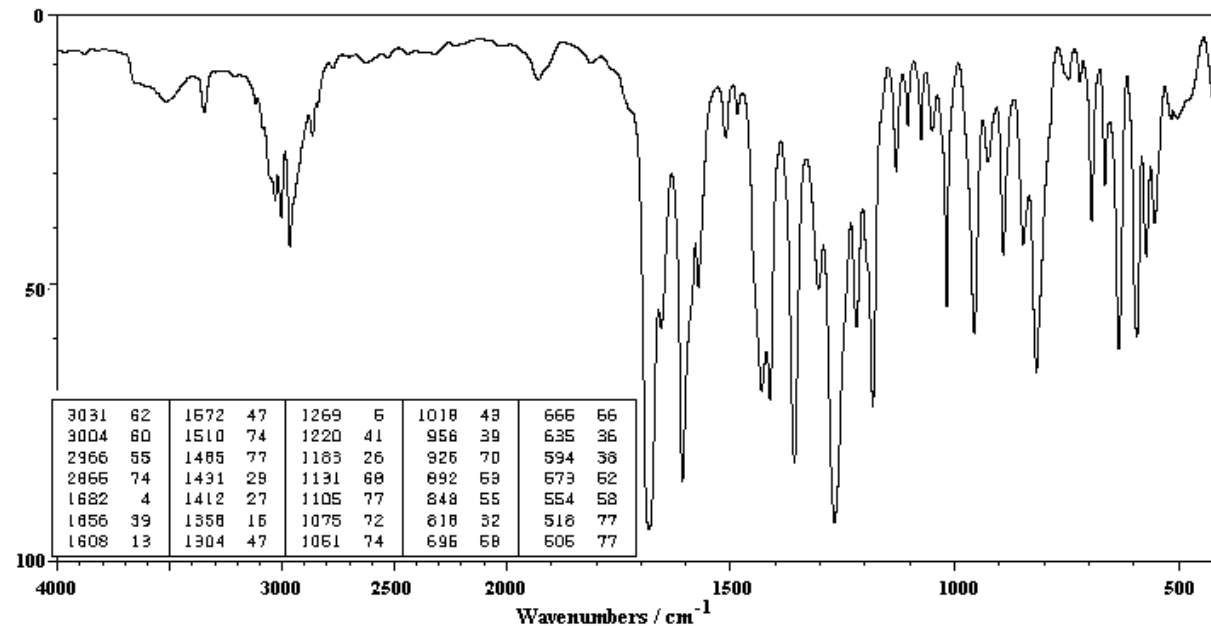
Absorbance / %



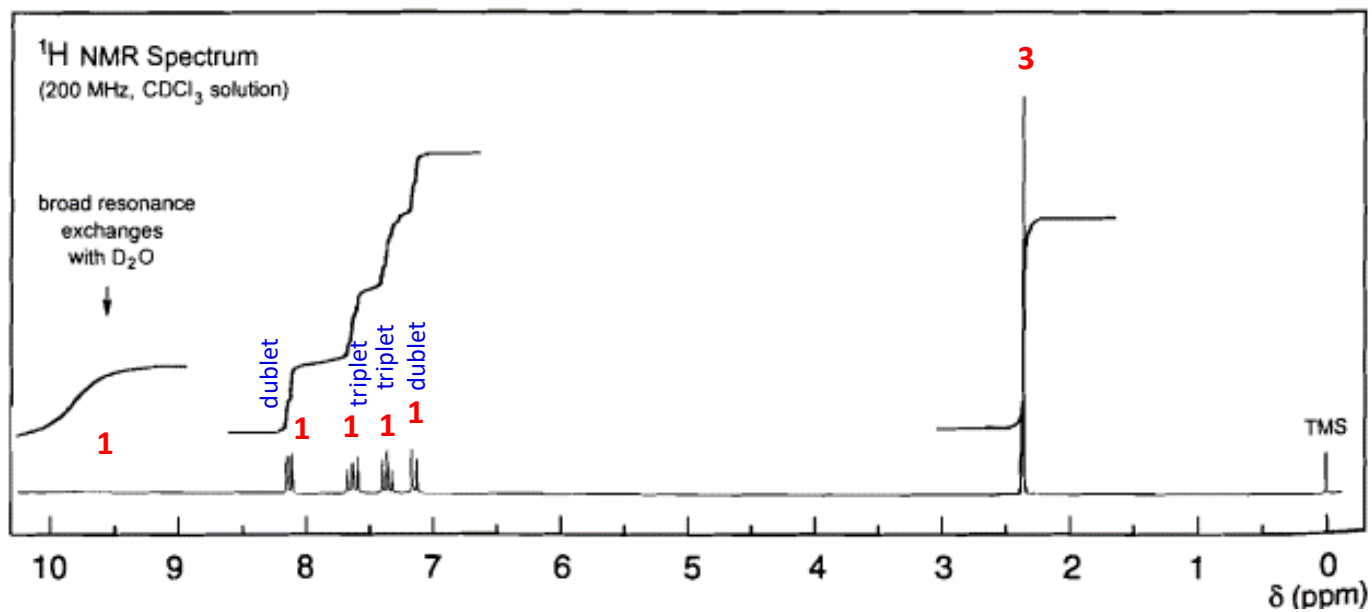
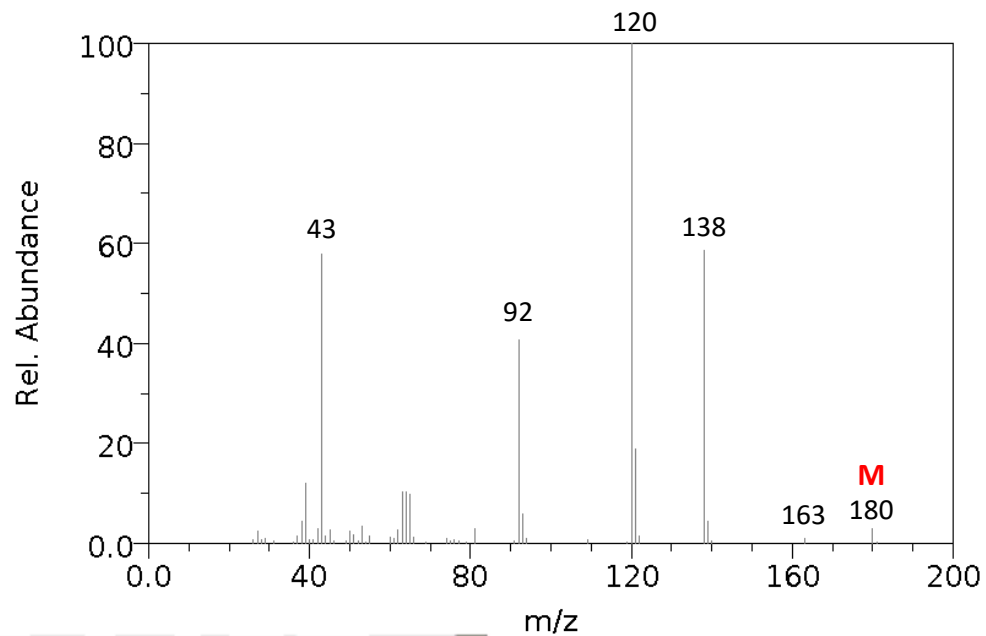
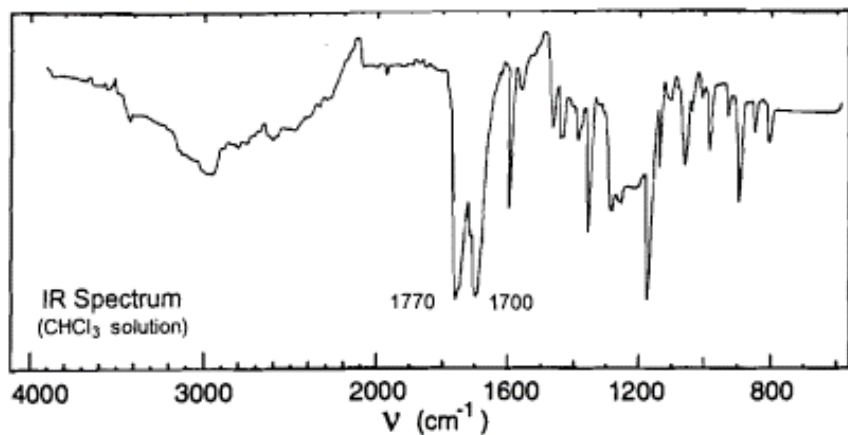
# Příklad 6



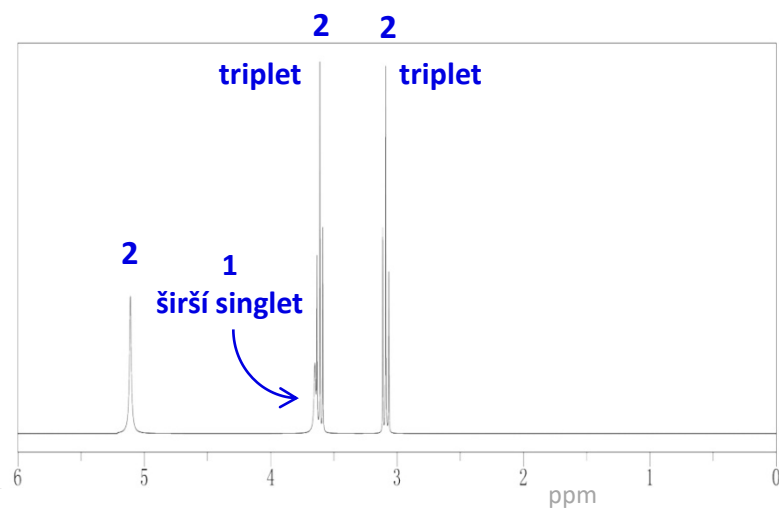
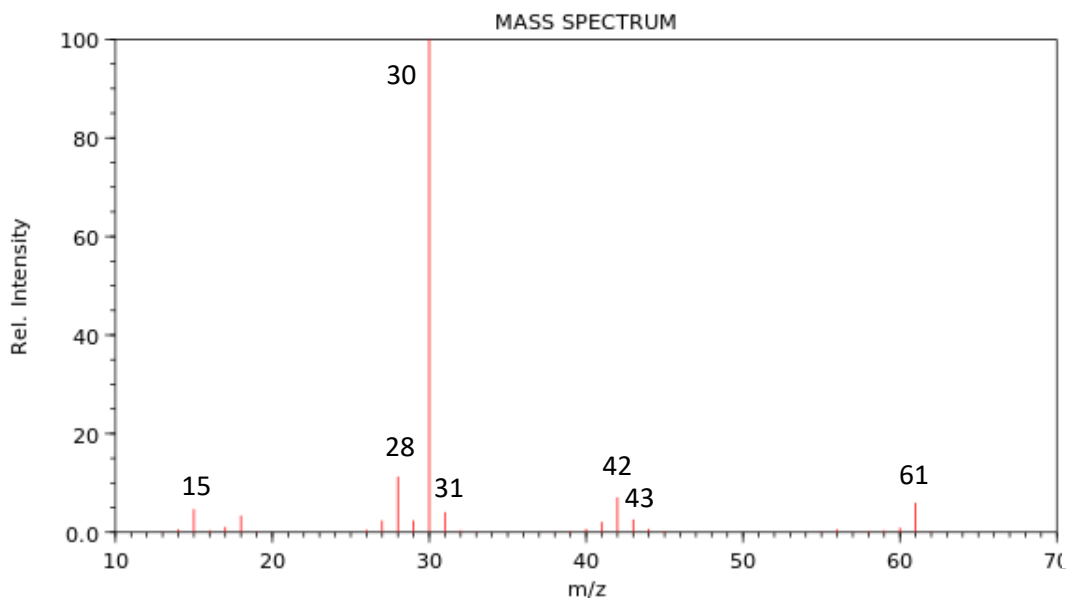
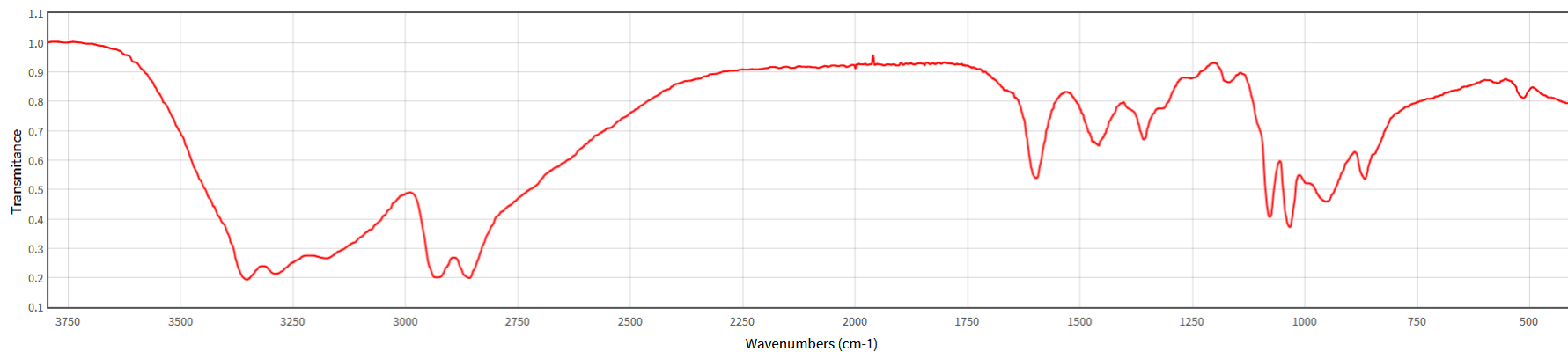
Absorbance / %



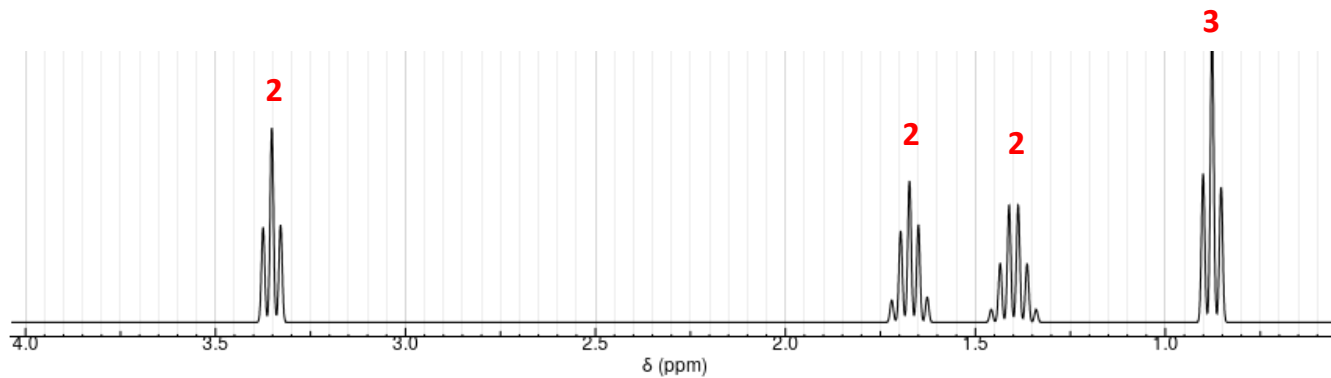
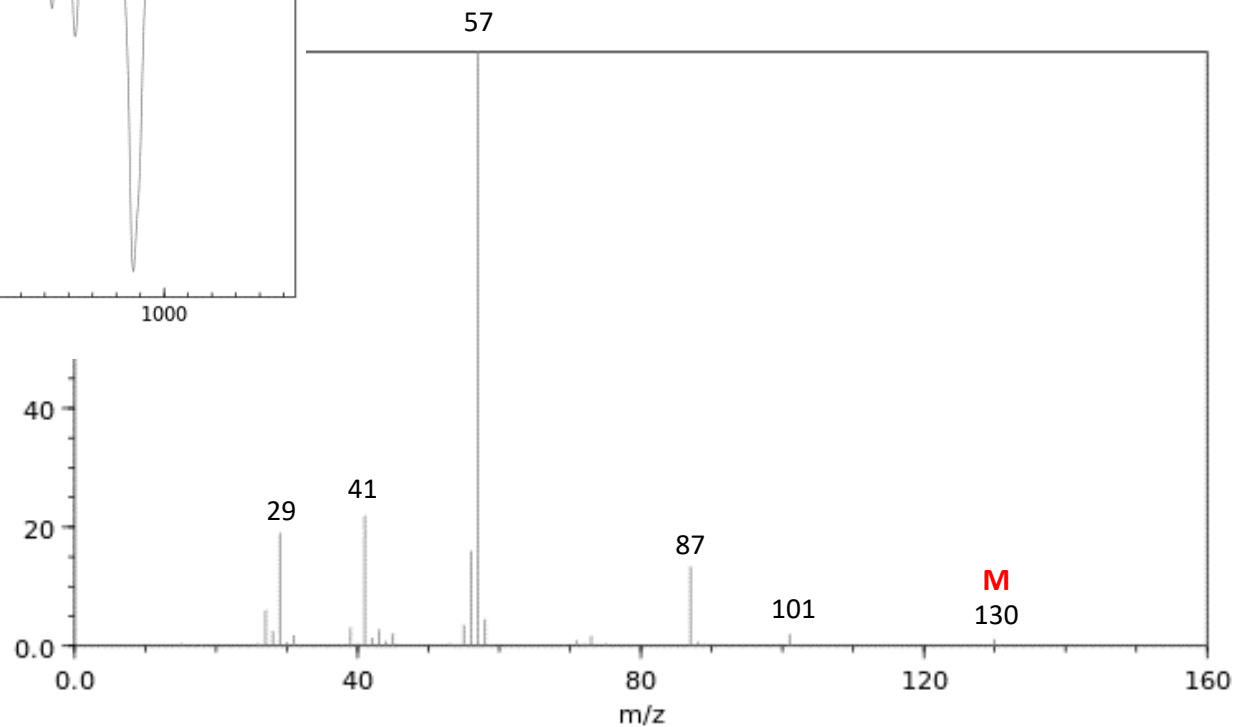
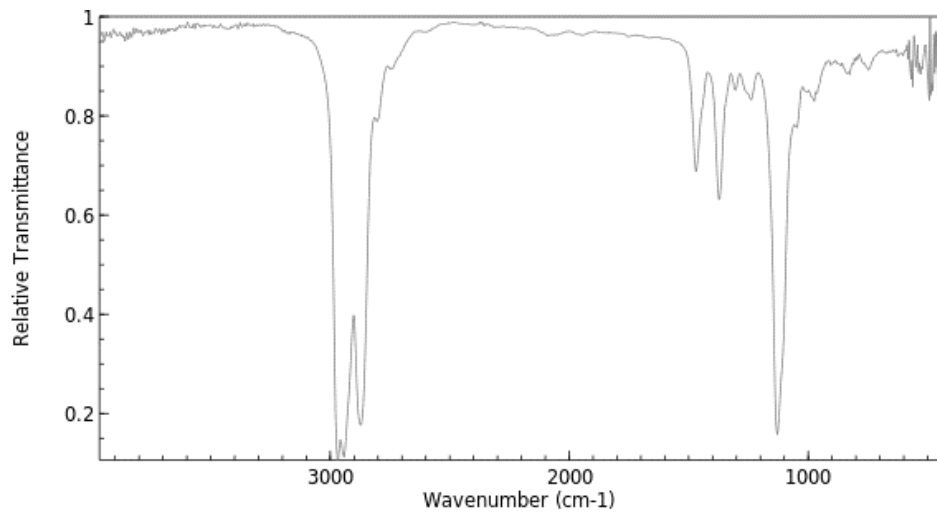
# Příklad 8

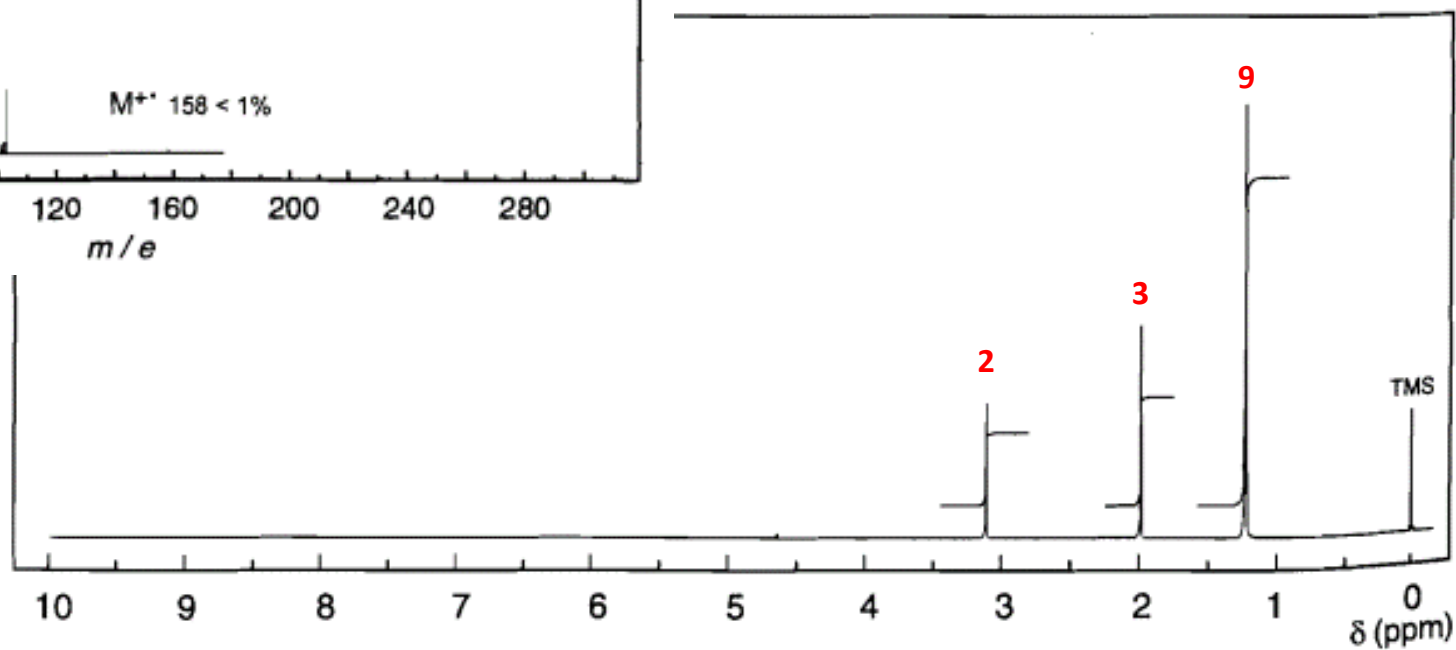
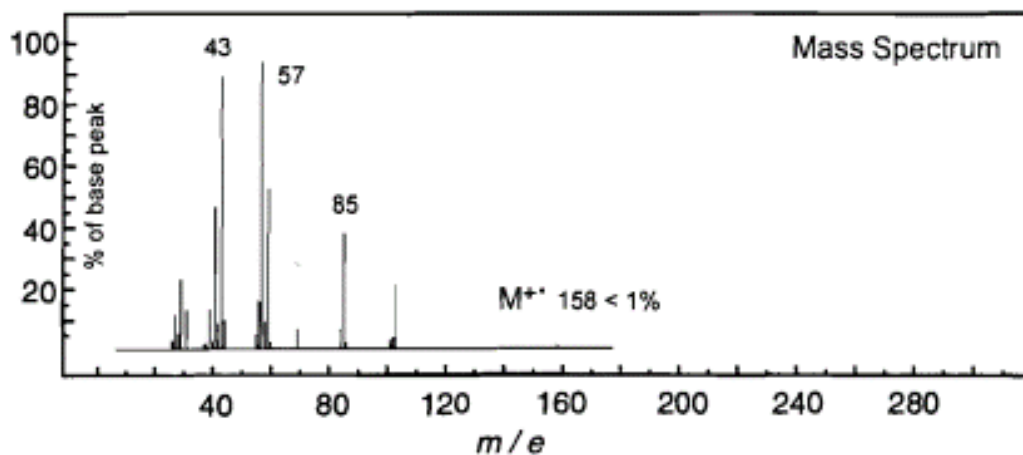
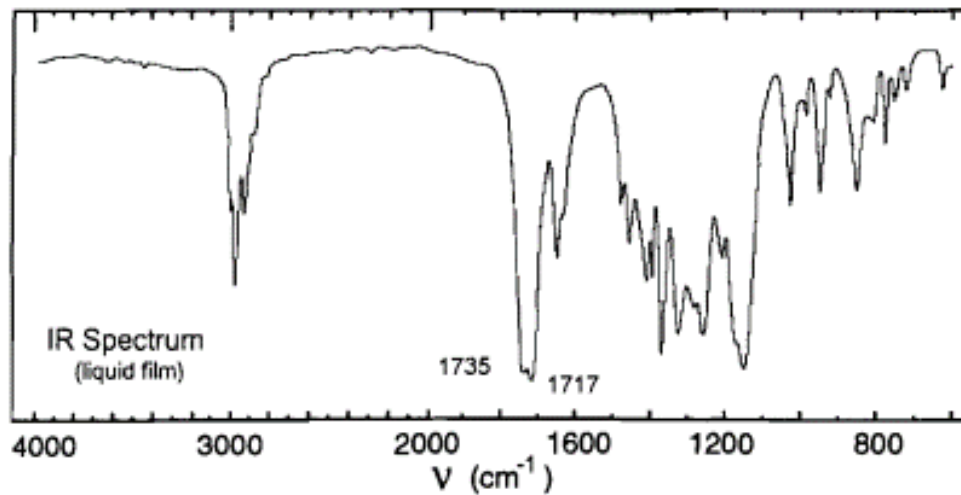




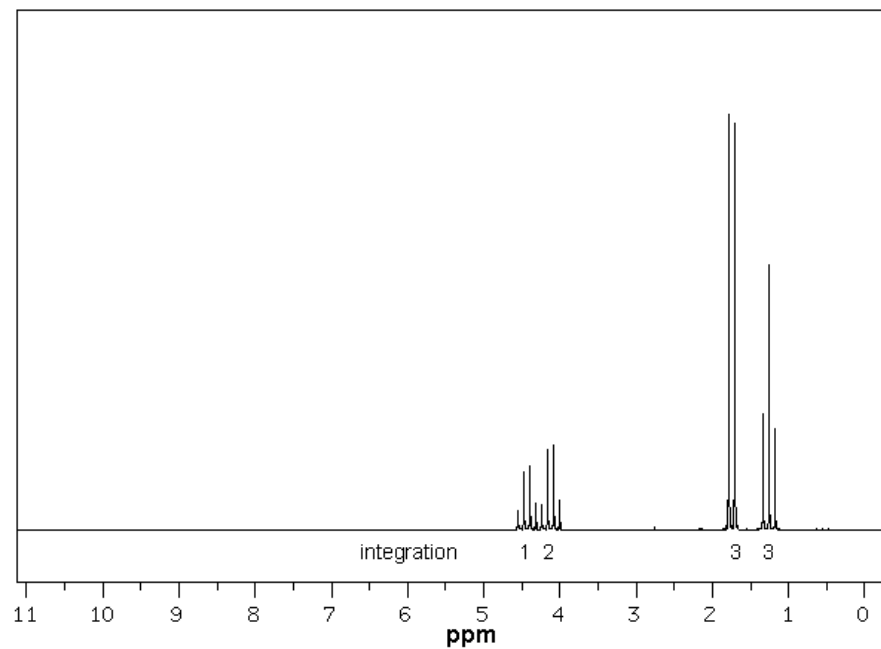
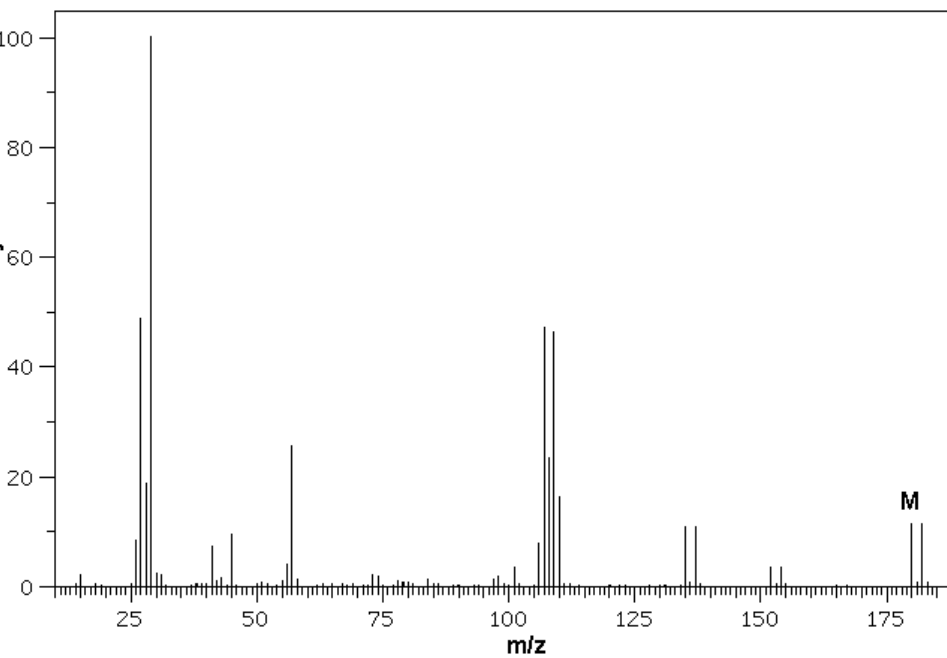
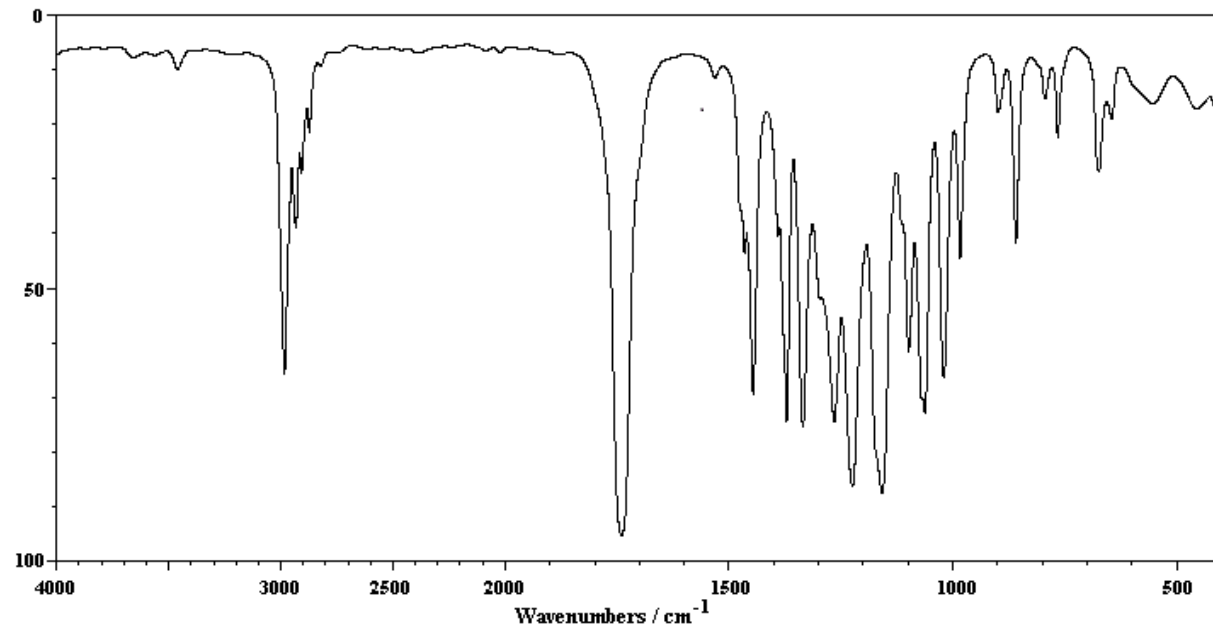


# Příklad 10

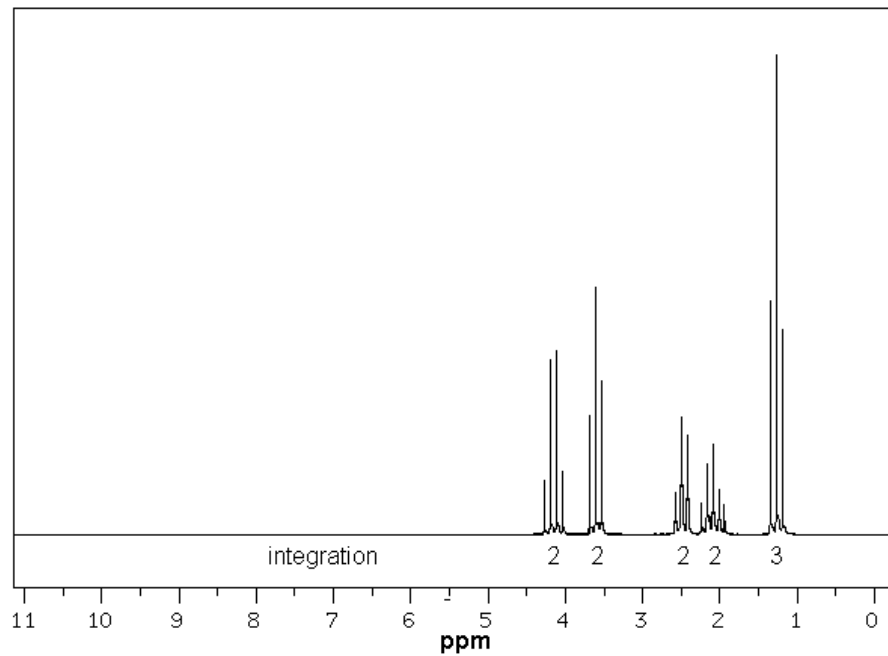
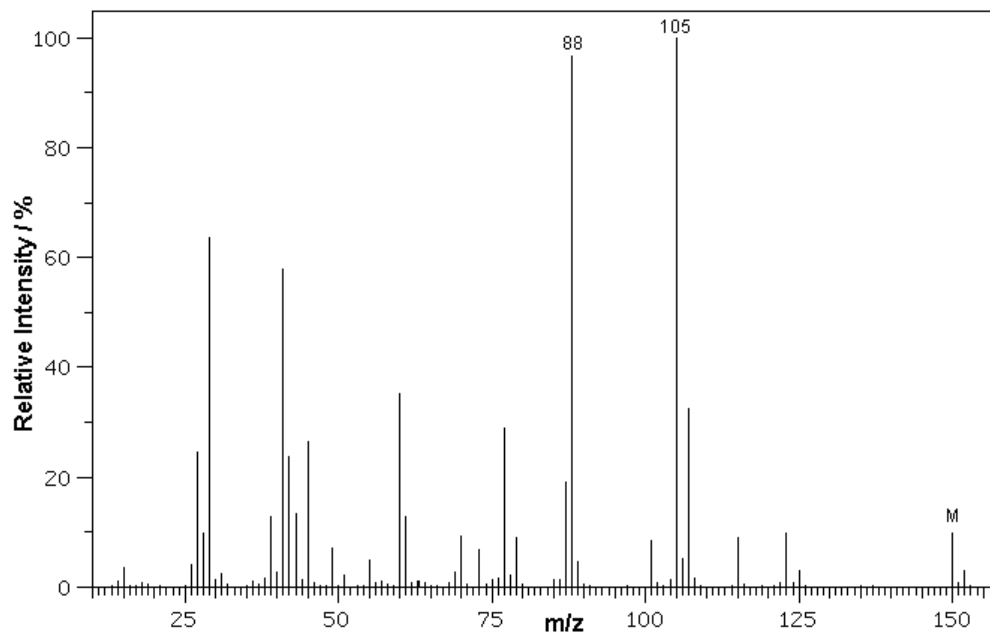
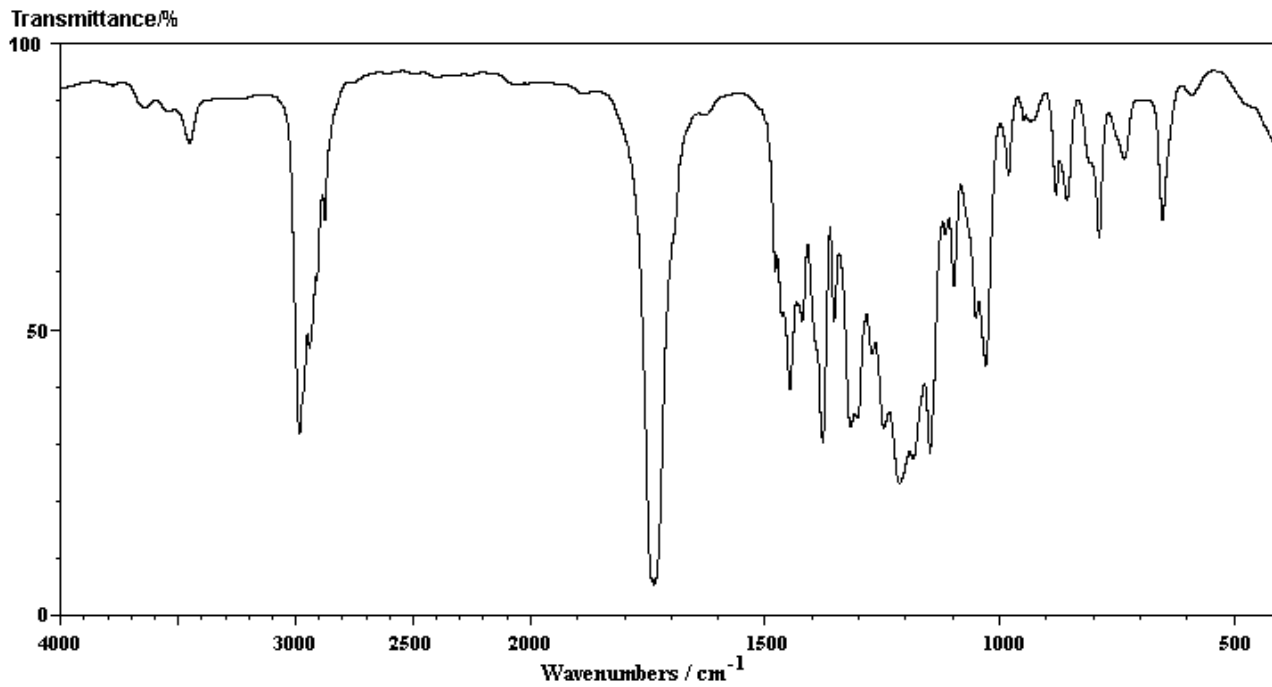




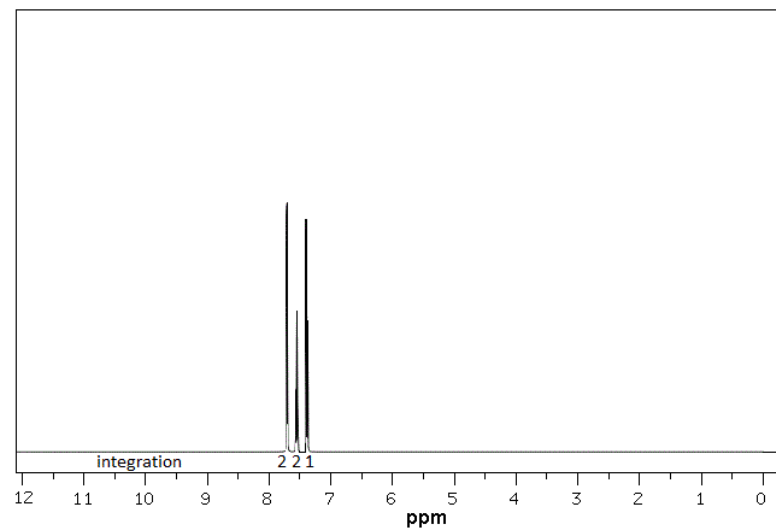
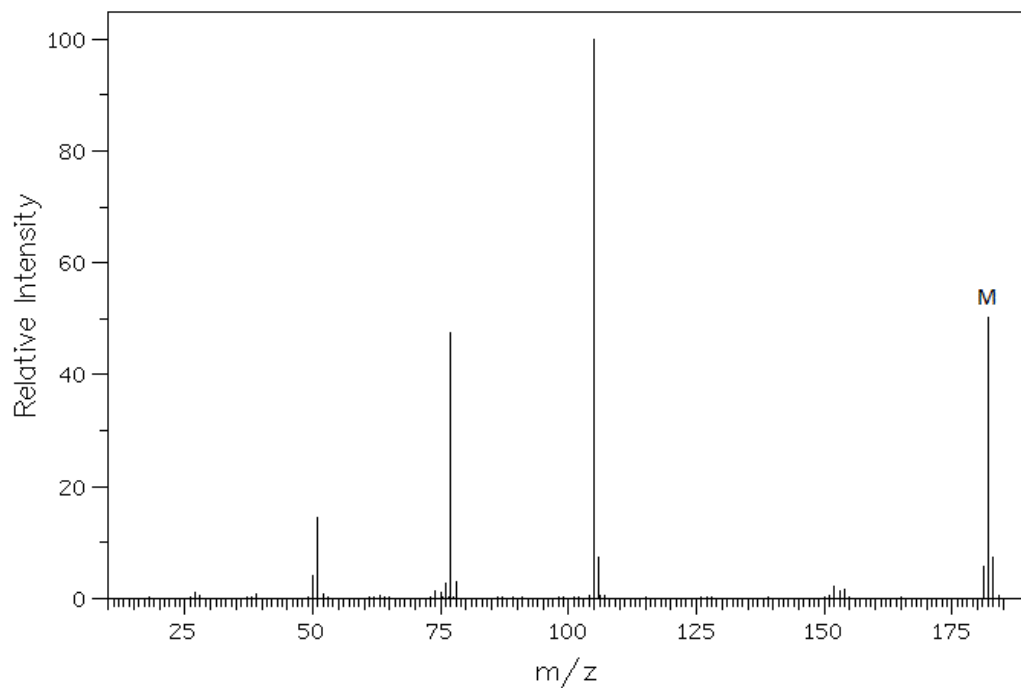
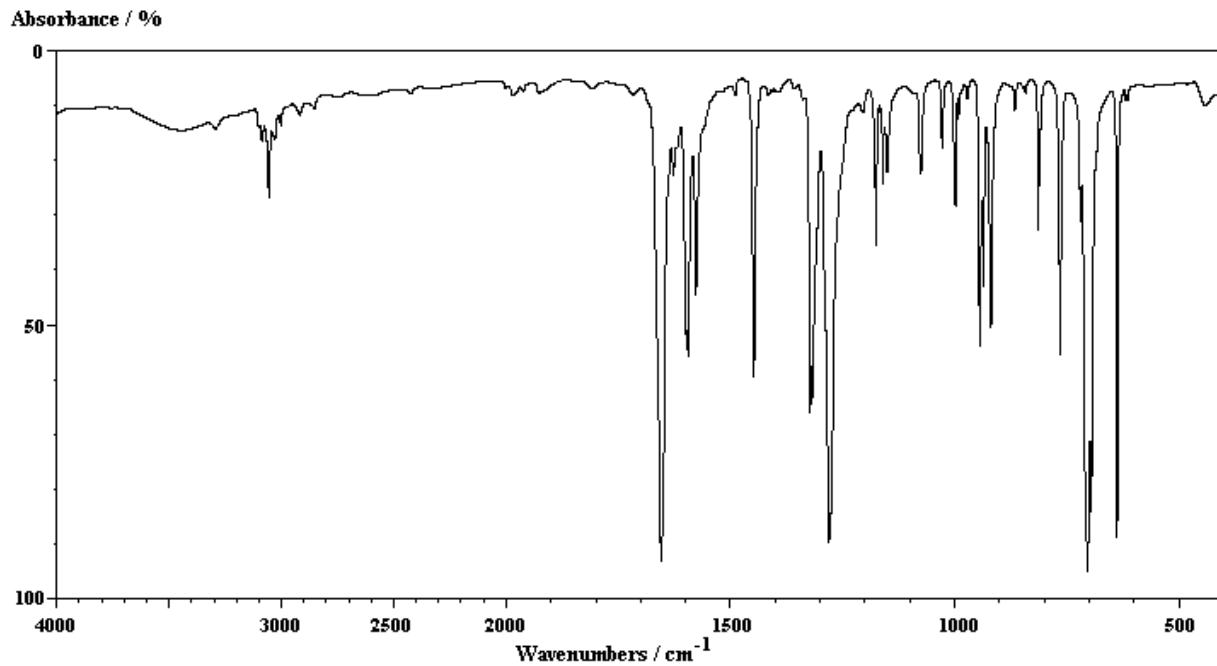
Absorbance / %



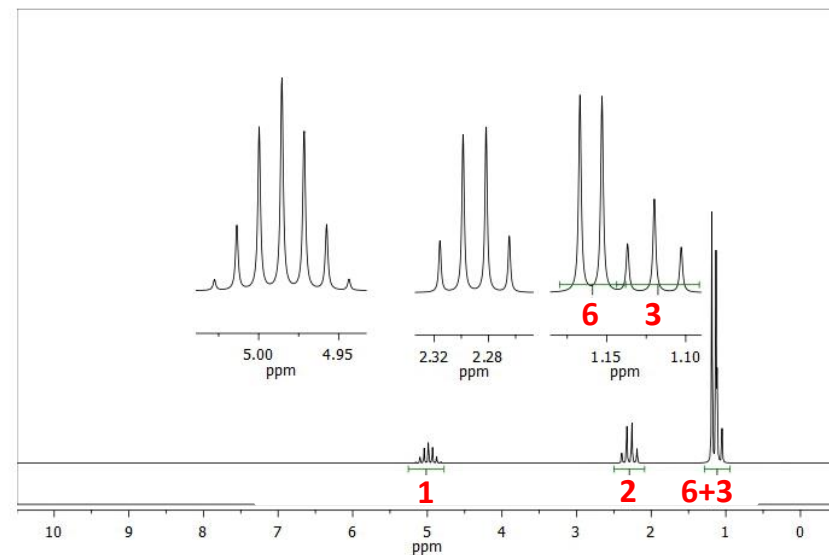
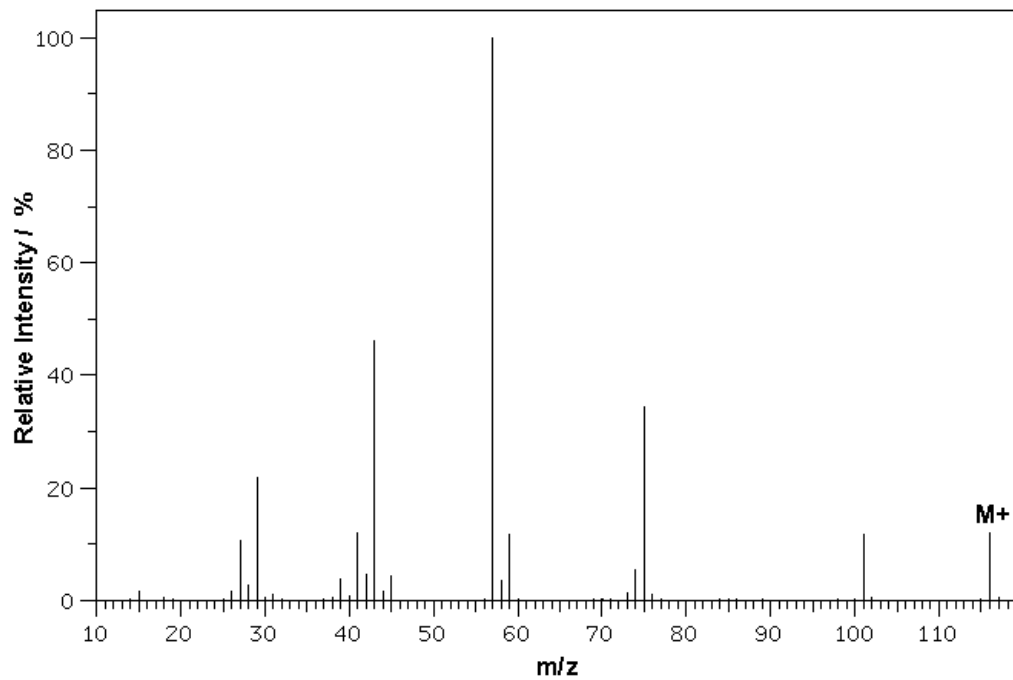
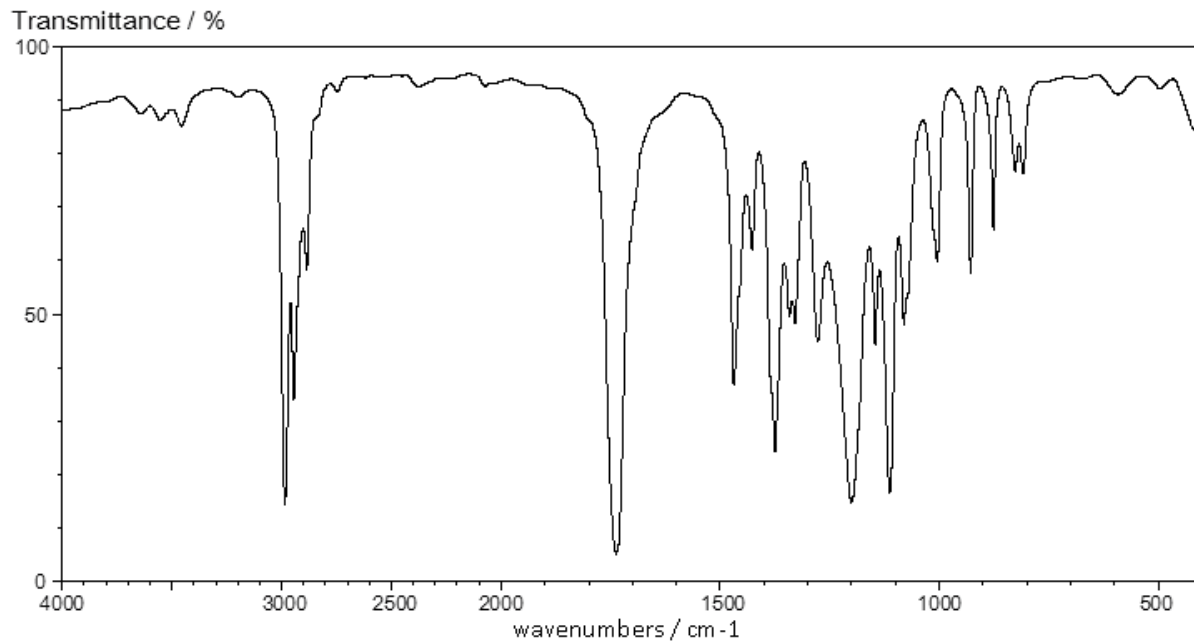
# Příklad 13



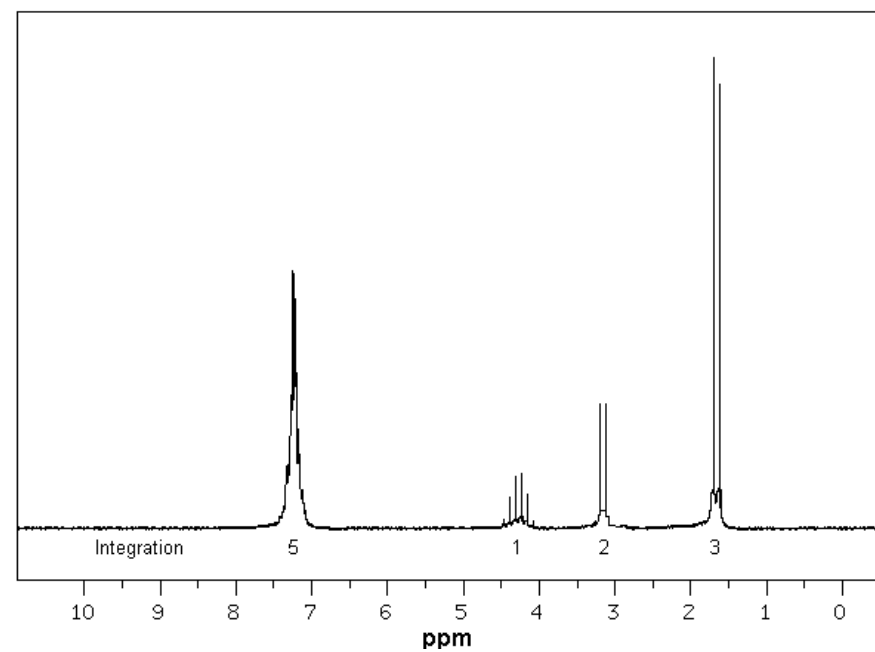
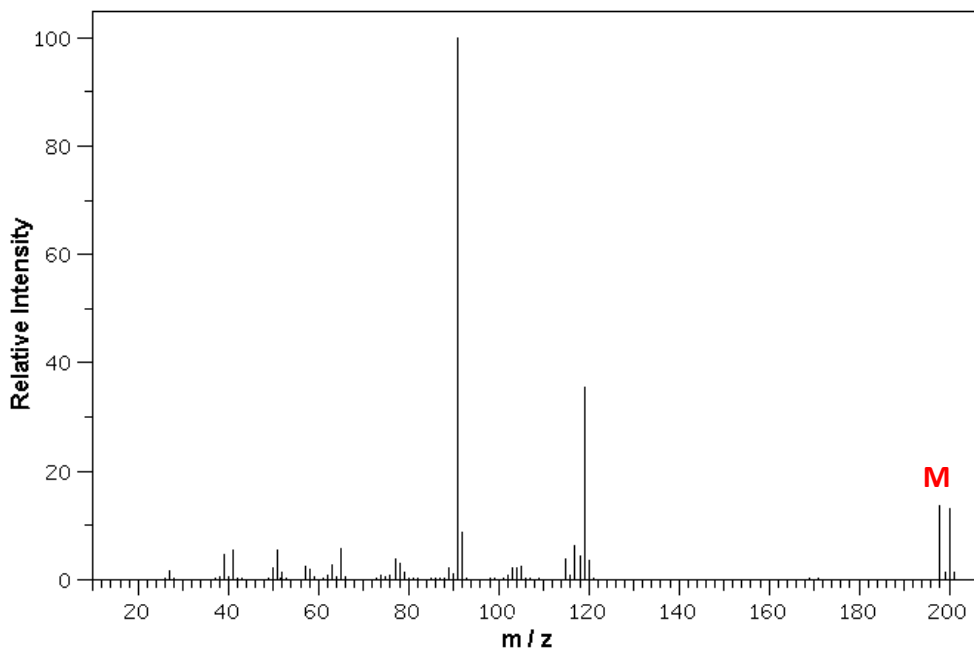
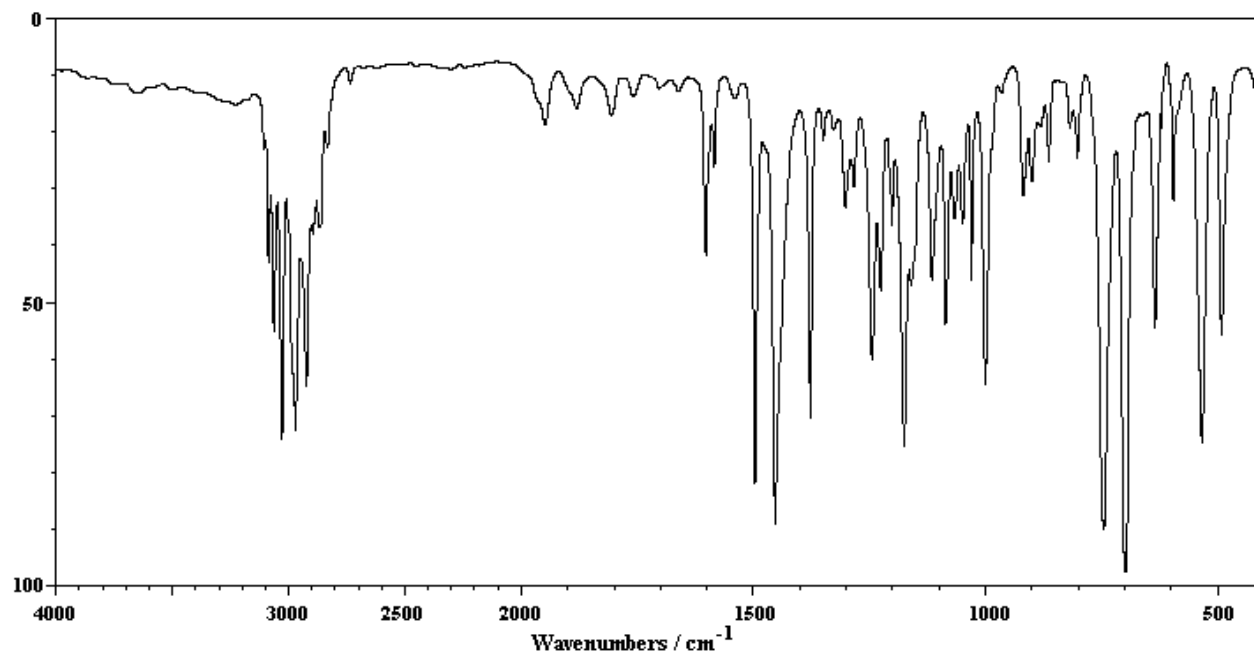
# Příklad 14



# Příklad 15

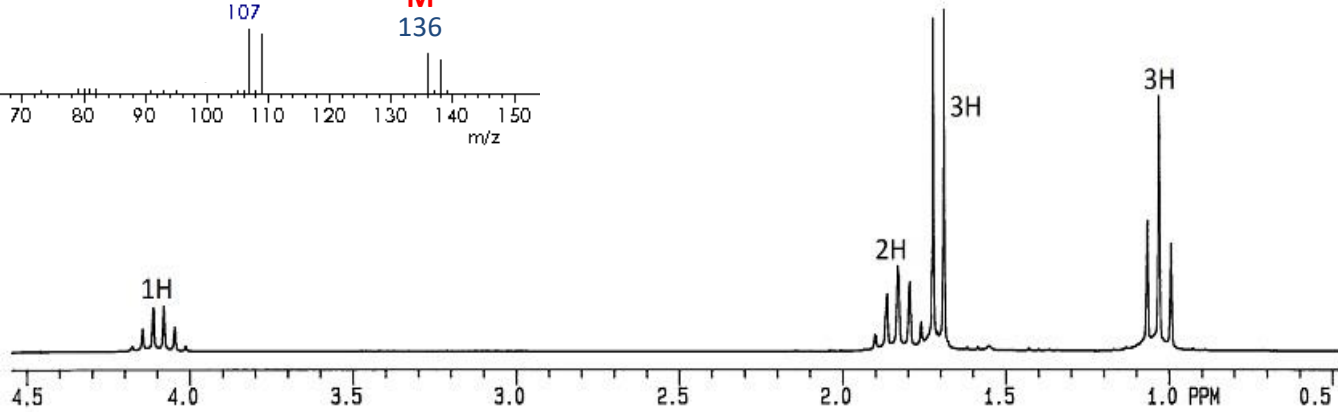
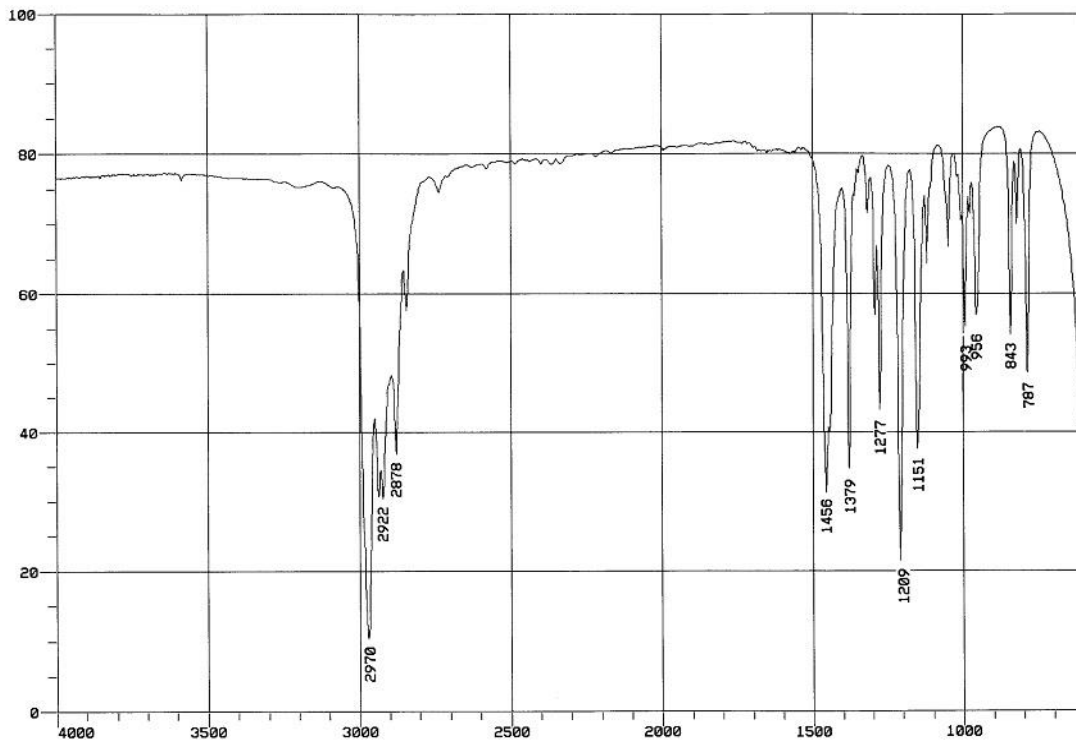
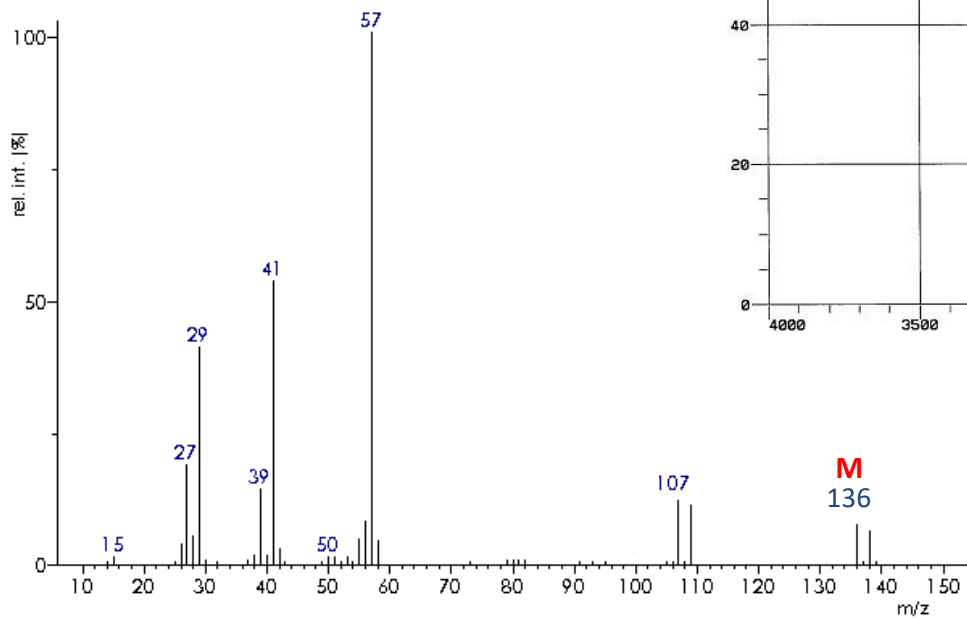


# Příklad 16



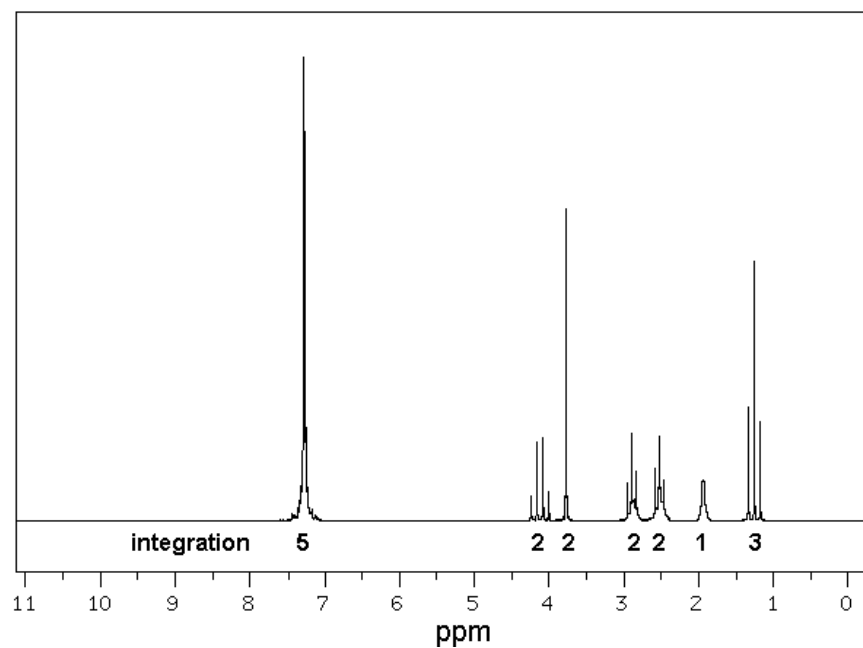
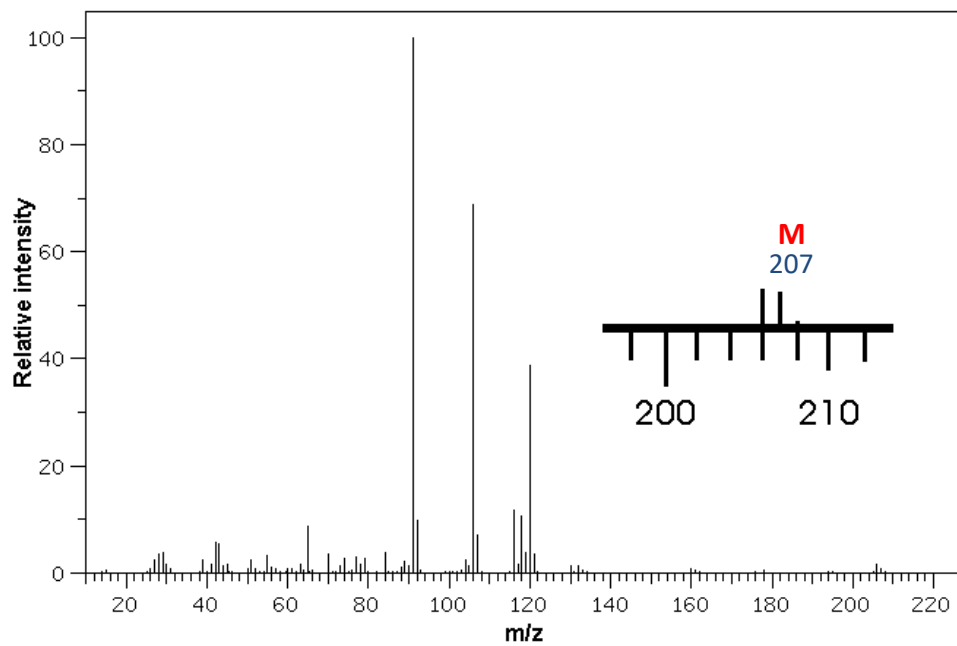
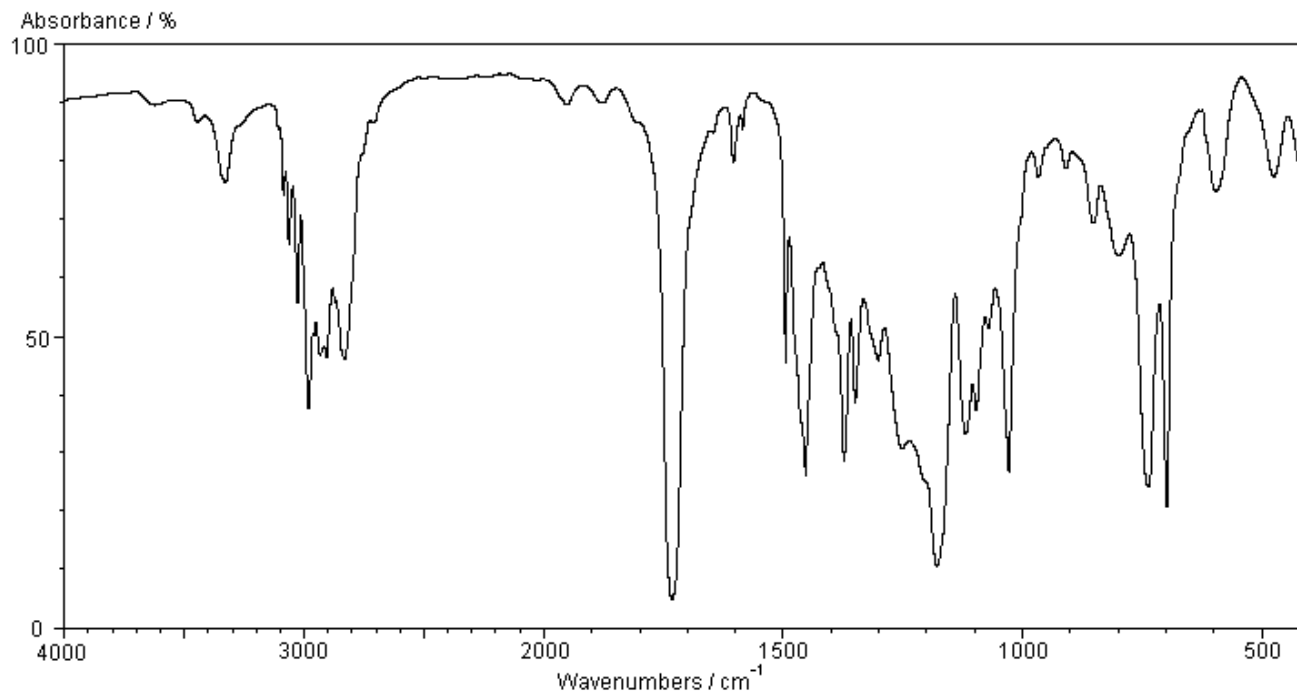


# Příklad 17



# Příklad 18

*Složitější*



# Příklad 19

Složitější

