

Color-Coded PEEK Tubing

- Chemically inert and biocompatible
- High strength polymer replaces stainless steel
- Easy to cut with razor blade or tubing cutters

PEEK tubing is the ideal metal-free tubing. Its mechanical strength, chemical resistance, and biocompatibility make it appropriate for a wide variety of high pressure LC applications. Tubing is color-coded to indicate i.d.

PEEK Tubing Specifications	
Material:	PEEK
Maximum Temperature:	100°C
Maximum Pressure:	Varies by Size, See Price Block
Typical Use:	High-Pressure Plumbing



5535

Striped PEEK Tubing

- No dye contacts fluid path



0753A

Striped PEEK Tubing

Color	o.d.	i.d.	Maximum Pressure (psig)	Length	Striped Part No.
Red	1/16"	0.005"	7,000	10' (3.05m)	35714
				50' (15.25m)	35715
Yellow	1/16"	0.007"	7,000	10' (3.05m)	35712
				50' (15.25m)	35713
Blue	1/16"	0.010"	5,000	10' (3.05m)	35702
				50' (15.25m)	35703
Orange	1/16"	0.020"	5,000	10' (3.05m)	35708
				50' (15.25m)	35709
Green	1/16"	0.030"	4,000	10' (3.05m)	35710
				50' (15.25m)	35711
Grey	1/16"	0.040"	3,000	10' (3.05m)	35705
				50' (15.25m)	35707
Black	1/16"	0.055"	1,000	10' (3.05m)	35741
				50' (15.25m)	35742

Solid Color PEEK Tubing

- Entire tube is colored for faster identification



0753B

Solid Color PEEK Tubing

Color	o.d.	i.d.	Maximum Pressure (psig)	Length	Solid Part No.
Red	1/16"	0.005"	7,000	10' (3.05m)	35720
				50' (15.25m)	35721
Yellow	1/16"	0.007"	7,000	10' (3.05m)	35722
				50' (15.25m)	35723
Blue	1/16"	0.010"	5,000	10' (3.05m)	35728
				50' (15.25m)	35729
Orange	1/16"	0.020"	5,000	10' (3.05m)	35726
				50' (15.25m)	35727
Green	1/16"	0.030"	4,000	10' (3.05m)	35724
				50' (15.25m)	35725
Natural	0.071"	0.030"	4,000	10' (3.05m)	35776
				50' (15.25m)	35778
	1/8"	0.062"	5,000	10' (3.05m)	35716
				50' (15.25m)	35717
	1/8"	0.080"	3,000	10' (3.05m)	35718
				50' (15.25m)	35719



6673

related products

Need high-pressure polymeric fittings? See pages 112–114 for our full selection of high-pressure fittings.



5377

related products

See page 391 for the Clean-cut tubing cutter designed to make clean square cuts on PEEK tubing.

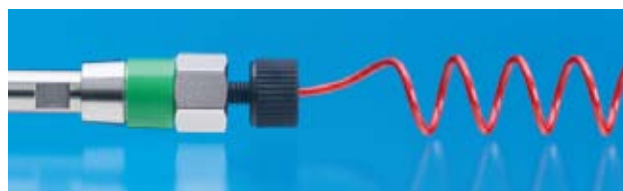
Flex-Connect™ PEEK Tubing

- Self-adjusting length
- Will not bend or kink
- PEEK construction is biocompatible and inert

Flex-Connect™ is ideal for modular LC systems, giving you the freedom to move components without breaking connections. The coiled format springs back to keep excess tubing out of your way. Each piece has 6" of straight tubing at each end and comes with two 1-piece Hex-Head Fittings. Tubing is color-coded to indicate i.d.



5527



Flex-Connect™ Tubing stretches to make connections easier.

6264

Striped Flex-Connect™ Tubing

- No dye contacts fluid path



0753A

Striped Flex-Connect™ PEEK Tubing

Color	o.d.	i.d.	Max. Pressure (psig)	Size Range*	Striped Part No.
Red	1/16"	0.005"	7,000	1–5cm	35851
				2–10cm	35852
				3–15cm	35853
				5–25cm	35854
				10–50cm	35855
Yellow	1/16"	0.007"	7,000	1–5cm	35861
				2–10cm	35862
				3–15cm	35863
				5–25cm	35864
				10–50cm	35865
Blue	1/16"	0.010"	5,000	1–5cm	35871
				2–10cm	35872
				3–15cm	35873
				5–25cm	35874
				10–50cm	35875
Orange	1/16"	0.020"	4,000	1–5cm	35881
				2–10cm	35882
				3–15cm	35883
				5–25cm	35884
				10–50cm	35885
Green	1/16"	0.030"	4,000	1–5cm	35891
				2–10cm	35892
				3–15cm	35893
				5–25cm	35894
				10–50cm	35895
				15–75cm	35896

*Size range indicates where coil is completely retracted and pulled to a comfortable distance. Excludes 6" straight piece on each end.

Custom Flex-Connect™ Tubing

Description	Part No.
Custom Flex-Connect™ Tubing*	C-35800

*Please specify the following when ordering: color coding (solid or striped), i.d. (0.005"–0.030"), and extended length (cm, 800cm max.).

Solid Color Flex-Connect™ Tubing

- Entire tube is colored for fast identification



0753B

Solid Color Flex-Connect™ PEEK Tubing

Color	o.d.	i.d.	Max. Pressure (psig)	Size Range*	Solid Part No.
Red	1/16"	0.005"	7,000	1–5cm	35801
				2–10cm	35802
				3–15cm	35803
				5–25cm	35804
				10–50cm	35805
Yellow	1/16"	0.007"	7,000	1–5cm	35811
				2–10cm	35812
				3–15cm	35813
				5–25cm	35814
				10–50cm	35815
Blue	1/16"	0.010"	5,000	1–5cm	35821
				2–10cm	35822
				3–15cm	35823
				5–25cm	35824
				10–50cm	35825
Orange	1/16"	0.020"	4,000	1–5cm	35831
				2–10cm	35832
				3–15cm	35833
				5–25cm	35834
				10–50cm	35835
Green	1/16"	0.030"	4,000	1–5cm	35841
				2–10cm	35842
				3–15cm	35843
				5–25cm	35844
				10–50cm	35845
Natural	1/8"	0.062"	2,500	5–50cm	35807
				10–100cm	35808
				20–200cm	35809
				5–50cm	35827
				10–100cm	35828
				20–200cm	35829

*Size range indicates where coil is completely retracted and pulled to a comfortable distance. Excludes 6" straight piece on each end.

Stainless Steel Tubing

Hi-EFF™ Tubing

Hi-EFF™ grade stainless steel tubing is especially tempered for easy bending and is washed with acetone to remove any residual materials. Type 316 is recommended for plumbing LC systems.

Stainless Steel Tubing

This Stainless Steel Tubing is the same high quality as the Hi-EFF™ grade, but has not been washed with acetone. Type 316 is recommended for LC use.



related product
Looking for tubing cutters?
Refer to page 391.

Hi-EFF™ and Standard Stainless Steel Tubing Specifications

Material:	300 Series Stainless Steel
Maximum Temperature:	500°C
Maximum Pressure:	Varies according to i.d.
Typical Use:	High-Pressure Plumbing

Stainless Steel Tubing

		o.d.	i.d.	10ft (3m)* Part No.	25ft (7.5m)* Part No.	50ft (15m)* Coil Part No.	200ft Coil Part No.	
<i>Hi-EFF™</i>	<i>Type 316 Stainless Steel</i>	1/8" (3.18mm)	0.085" (2.16mm)	5141338	5141342	30109	—	
		1/4" (6.35mm)	0.210" (5.33mm)	5141337	5141343	30309	—	
	<i>Type 304 Stainless Steel</i>	1/8" (3.18mm)	0.085" (2.16mm)	5141336	5141344	30106	—	
		1/4" (6.35mm)	0.210" (5.33mm)	5141335	5141345	30306	—	
<i>Standard</i>	<i>Type 316 Stainless Steel</i>	1/32" (0.79mm)	0.007" (0.18mm)	5141387	5141320	81951	—	
		1/16" (1.59mm)	0.004" (0.10mm)	5141386	5141321	30212	—	
			0.007" (0.18mm)	5141385	5141322	30142	—	
			0.010" (0.25mm)	5141384	5141323	3005	30052	
			0.020" (0.51mm)	5141383	5141324	3002	300220	
		0.030" (0.76mm)	5141382	5141325	3000	300020		
		0.040" (1.02mm)	5141381	5141326	3003	—		
		0.050" (1.27mm)	5141380	5141327	3004	—		
		<i>Type 304 Stainless Steel</i>	1/8" (3.18mm)	0.085" (2.16mm)	5141346	5141410	3010	30108
			1/16" (4.76mm)	0.147" (3.73mm)	5141332	5141413	3020	—
1/4" (6.35mm)	0.210" (5.33mm)		5141333	5141412	3030	—		
		3/8" (9.53mm)	0.305" (7.75mm)	5141334	5141411	3032†	—	

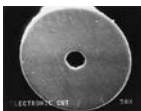
*Meters based on closest estimate; feet being exact. †40' coil.

EDM-Cut Stainless Steel Tubing

- Highly polished, burr-free ends
- Ultra-low volume connections
- Ultrasonically cleaned and passivated for maximum inertness
- Cut using an Electronic Discharge Machine (EDM)
- Color-coded caps identify internal diameter

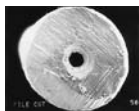
EDM-Cut Stainless Steel Tubing Specifications

Material:	316 Grade Stainless Steel
Maximum Temperature:	500°C
Maximum Pressure:	Varies according to i.d.*
Typical Use:	High-Pressure Plumbing



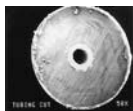
EDM Cut

0743



File Cut

0744



Abrasive Cut

0745

EDM-Cut Stainless Steel Tubing

Cap Color	i.d. (10/pk)	Length	Part No.
Red	0.005"	4cm	97001
		5cm	97006
		10cm	97011
		20cm	97016
		30cm	97021
Black	0.007"	5cm	97026
		10cm	97031
		20cm	97036
		30cm	97041
Blue	0.010"	5cm	97046
		10cm	97056
		20cm	97061
		30cm	97066
Green	0.020"	5cm	97076
		10cm	97081
		20cm	97086
		30cm	97091

tubing

EDM-Cut Stainless Steel Tubing Kits



6263

EDM-Cut Stainless Steel Tubing Kits

Description	Tubing i.d.	Part No.
Standard Tubing Kit—Includes 10 pieces 5cm and 10cm tubing	0.005"	97132
	0.007"	97134
	0.010"	97136
	0.020"	97138
	0.030"	97141
Deluxe Tubing Kit—10 pieces—5cm x 0.010, 10cm x 0.010, 5cm x 0.020, 10cm x 0.020 5 pieces—2cm x 0.010, 2cm x 0.020 2 pieces—5cm x 0.030, 10cm x 0.030, 20cm x 0.030	Varies	97131

Low-Pressure Tubing

Tefzel® Tubing

- Higher pressure rating compared to PTFE tubing



5530

Tefzel® Tubing Specifications	
Material:	Tefzel®
Maximum Temperature:	100°C
Maximum Pressure:	Varies by Size, See Price Block
Typical Use:	Low-Pressure Plumbing

Tefzel® Tubing

o.d.	i.d.	Length	psig	Part No.
1/16"	0.007"	10'	4000	35681
1/16"	0.007"	50'	4000	35682
1/16"	0.010"	10'	3600	35685
1/16"	0.010"	50'	3600	35686
1/16"	0.020"	10'	3200	35699
1/16"	0.020"	50'	3200	35672
1/16"	0.030"	10'	2500	35701
1/16"	0.030"	50'	2500	35673

PTFE Tubing

- Maximum inertness



5531

PTFE Tubing Specifications	
Material:	PTFE
Maximum Temperature:	100°C
Maximum Pressure:	Varies by Size, See Price Block
Typical Use:	Low Pressure Plumbing

PTFE Tubing

o.d.	i.d.	Length	psig	Part No.
1/16"	0.007"	10'	1600	35677
1/16"	0.007"	50'	1600	35678
1/16"	0.010"	10'	1500	20064
1/16"	0.010"	50'	1500	35669
1/16"	0.020"	10'	1200	20033
1/16"	0.020"	50'	1200	35668
1/16"	0.030"	10'	900	20031
1/16"	0.030"	50'	900	35670
1/16"	0.040"	10'	600	20106
1/16"	0.040"	50'	600	3132
1/8"	0.063"	10'	900	20063
1/8"	0.063"	50'	900	35671
1/8"	0.100"	10'	300	20096
1/8"	0.100"	50'	300	3134
0.160"	0.125"	10'	300	35667
0.160"	0.125"	50'	300	35674
1/4"	0.125"	50'	900	3136

Color-Coded PTFE Tubing

- Color-coded for easy identification of i.d.



5532

Color-Coded PTFE Tubing Specifications	
Material:	PTFE
Maximum Temperature:	100°C
Maximum Pressure:	Varies by Size, See Price Block
Typical Use:	Low-Pressure Plumbing

Color-Coded PTFE Tubing

Color	o.d.	i.d.	Length	psig	Part No.
Blue	1/16"	0.010"	10'	1500	35660
	1/16"	0.010"	50'	1500	35661
Orange	1/16"	0.020"	10'	1200	35662
	1/16"	0.020"	50'	1200	35663
Green	1/16"	0.030"	10'	900	35664
	1/16"	0.030"	50'	900	35665

Low Permeation Tubing

- Eliminates regassing without sacrificing inertness
- Flexible, convenient, and versatile
- Easy to install and use



5533

This low-pressure tubing has a double wall to prevent mobile phase regassing. The inert inner PTFE wall carries the mobile phase. The non-wetted outer wall is made from a translucent, flexible polymer with extremely low gas permeability. This low permeation tubing cuts regassing rates to negligible levels, while preserving PTFE's chemical resistance, visibility, and handling properties. Use with low permeation fittings kit.

Low Permeation Tubing Specifications	
Material:	PTFE, Proprietary Non-Wetted Outer Layer
Maximum Temperature:	100°C
Maximum Pressure:	900psig
Typical Use:	Low-Pressure Plumbing

Low Permeation Tubing

o.d.	i.d.	Length	Part No.
1/8"	1.5mm	10'	47100
1/8"	1.5mm	50'	47102

Low Permeation Fittings Kit

Description	Part No.
1/4-28 Low Permeation Fittings Kit*	47120

*Includes 10 nuts, 10 ferrules, 10 inserts.

Stainless Steel Tubing

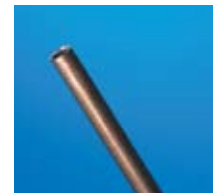
AT™ Steel—Activity Tested Steel Tubing

Delivers the Strength of Stainless Steel and the Inertness of Deactivated Fused Silica

- Flexible, and strong
- Maximum temperature limit of 340°C–350°C

A combination of chemical vapor deposition techniques and silicone chemistries transform durable stainless steel tubing into a chromatographically inert material. AT™ Steel activity tested steel tubing is suitable for sample loops, transfer lines, capillary, and packed GC columns.

AT™ Steel may be cut with standard tubing cutters or high speed wheel cutters and can be rinsed with common solvents to remove particulates and contamination that have built up during use. To ensure a truly inert pathway, use AT™ Steel treated fittings. Sold separately below.



5105

AT™ Steel Tubing

i.d.	6ft Length Part No.	25ft Length Part No.	50ft Length Part No.	100ft Length Part No.
<i>1/32" o.d. Tubing</i>				
0.021"	11085	11086	11087	11088
<i>1/16" o.d. Tubing</i>				
0.010"	11060	11061	11062	11063
0.020"	11064	11065	11066	11067
0.030"	11068	11069	11070	11071
0.040"	11072	11073	11074	—
<i>1/8" o.d. Tubing</i>				
0.085"	11076	11077	11078	—
<i>1/4" o.d. Tubing</i>				
0.210"	11092	11093	—	—

AT™ Steel Unions

Description	Part No.
1/8"–1/16" Reducing Union	11080
1/16" Union	11081
1/8" Union	11082

AT™ Steel Tees

Description	Part No.
1/16" Tee	11083
1/8" Tee	11084

Fittings are Parker-Hannifin® A-Lok® fittings with two-piece ferrules that have been chemically modified for improved inertness.

Straight Stainless Steel Tubing

- Type 304 Stainless Steel
- 6ft or 10ft lengths



5097

Straight Stainless Steel Tubing

o.d.	i.d.	Length*	Qty.	Part No.
1/8" (3.18mm)	0.085" (2.16mm)	6ft	10	30106ST
1/8" (3.18mm)	0.085" (2.16mm)	10ft	10	301010ST
1/4" (6.35mm)	0.210" (5.33mm)	6ft	10	30306ST
1/4" (6.35mm)	0.210" (5.33mm)	10ft	10	303010ST

*10ft lengths must ship via motor freight.

PTFE-Coated Stainless Steel Tubing

- Sturdy SS tube with 0.001" thick PTFE coating
- Must be preconditioned at 250°C for three hours



5103

PTFE-Coated Stainless Steel Tubing

o.d.	i.d.	Length	Part No.
1/8" (3.18mm)	0.085" (2.16mm)	per ft*	31421
1/8" (3.18mm)	0.085" (2.16mm)	50ft	3142
1/4" (6.35mm)	0.210" (5.33mm)	per ft*	31441
1/4" (6.35mm)	0.210" (5.33mm)	50ft	3144

*Minimum tubing order is 3ft.

tech tip

Choosing a tubing material for GC analysis.

A number of options are available for packed column tubing. The most inert material is glass, which should be used for active compounds. Glass-lined tubing and AT™ Steel provide the inert surface of glass combined with the mechanical strength of a metal column.

Metal tubing provides an economical and rugged column for suitable application. Passivated nickel tubing can frequently be used with active compounds such as phenols and amines. Stainless steel tubing is recommended for hydrocarbon, fixed gas, and solvent analyses where column inertness is less of a concern.

PTFE tubing is extremely inert, but due to temperature limitations and poor column efficiency, PTFE is generally only recommended for the analysis of corrosive gases which are too reactive for glass.

Glass-Lined Stainless Steel Tubing (GLT)

- Flow lines for corrosives
- GC/MS interfaces
- Capillary column connections



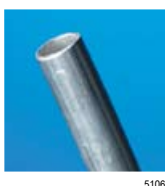
Glass-Lined Stainless Steel Tubing

o.d.	i.d.	Length	Part No.
1/16" (1.59mm)	0.3mm	180cm	3137
1/16" (1.59mm)	0.5mm	180cm	3164
1/16" (1.59mm)	0.7mm	180cm	3139
1/8" (3.18mm)	0.75mm	180cm	3166
1/8" (3.18mm)	1.0mm	180cm	3168
1/8" (3.18mm)	1.5mm	180cm	3170
1/8" (3.18mm)	1.8mm	180cm	3141
1/4" (6.35mm)	4.0mm	180cm	3149

Metal Tubing

Aluminum Tubing

- Economical choice for GC gas lines



Aluminum Tubing

o.d.	i.d.	Length	Part No.
1/8" (3.18mm)	0.065" (1.65mm)	50ft	3090
3/16" (4.76mm)	0.128" (3.25mm)	50ft	3100
1/4" (6.35mm)	0.190" (4.83mm)	50ft	3110
3/8" (9.53mm)	0.315" (8.00mm)	50ft	3120

Copper Tubing

- Economical choice for GC gas lines

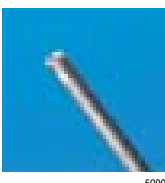


Copper Tubing

o.d.	i.d.	Length	Part No.
1/8" (3.18mm)	0.065" (1.65mm)	50ft	3040
3/16" (4.76mm)	0.128" (3.25mm)	50ft	30509
1/4" (6.35mm)	0.190" (4.83mm)	50ft	30609
3/8" (9.53mm)	0.315" (8.00mm)	50ft	30709

Nickel Tubing

- Pure Nickel 200, more inert than stainless steel
- Acid washed and rinsed for additional inertness



Nickel Tubing

o.d.	i.d.	Part No.
<i>50-Foot Coil</i>		
1/16" (1.59mm)	0.010" (0.25mm)	3083
1/16" (1.59mm)	0.020" (0.51mm)	3131
1/16" (1.59mm)	0.040" (1.02mm)	3085
1/8" (3.18mm)	0.083" (2.11mm)	3080
1/4" (6.35mm)	0.210" (5.33mm)	3081
<i>200-Foot Coil</i>		
1/16" (1.59mm)	0.010" (0.25mm)	30832
1/16" (1.59mm)	0.020" (0.51mm)	31312

PTFE-Lined Stainless Steel Tubing

- Ideal for use with reactive chemicals and for trace quantities of water
- Order PTFE ferrules to grip SS and PTFE portions of tubing below



PTFE-Lined Stainless Steel Tubing

o.d.	i.d.	Length	Qty.	Part No.
1/8" (3.18mm)	0.070" (1.78mm)	6ft	1	3152
1/8" (3.18mm)	0.070" (1.78mm)	10ft	1	3154
1/4" (6.35mm)	0.180" (4.57mm)	6ft	1	3156

Polymeric Tubing

- Maximum Inertness



PFA (Perfluoroalkoxy) Tubing

PFA (Perfluoroalkoxy) Tubing

o.d.	i.d.	Length	Part No.
1/16" (1.59mm)	0.030" (0.76mm)	25ft	45734
1/8" (3.18mm)	0.062" (1.57mm)	25ft	45735
1/4" (6.35mm)	0.156" (3.96mm)	25ft	45736

FEP (Fluorinated Ethylene Polypropylene) Tubing

FEP (Fluorinated Ethylene Polypropylene) Tubing

o.d.	i.d.	Length	Part No.
1/16" (1.59mm)	0.030" (0.76mm)	25ft	45739
1/8" (3.18mm)	0.062" (1.57mm)	25ft	45740
1/4" (6.35mm)	0.156" (3.96mm)	25ft	45741

Polypropylene/Polyethylene Tubing

Polypropylene/polyethylene Tubing

o.d.	i.d.	Type	Length	Part No.
1/8" (3.18mm)	0.080" (2.03mm)	PP	50ft	3203
1/8" (3.18mm)	0.080" (2.03mm)	PP	100ft	3201
1/4" (6.35mm)	0.125" (3.17mm)	PE	50ft	3207
1/4" (6.35mm)	0.125" (3.17mm)	PE	100ft	3205



related products

Need fittings?

See pages 282–285 for a complete selection of GC fittings.

PEEKsil™ Tubing

- Inert fused silica bonded to PEEK
- Square cut and polished tubing ends for zero dead volume connections
- Ideal for plumbing micro, capillary and nano LC systems



SGE's PEEKsil™ tubing maintains the easy handling and convenience of PEEK tubing, but offers the tight i.d. tolerances that can only be offered with fused silica.

Each PEEKsil™ tubing end is cut to an exact 90° angle and polished smooth to ensure a true zero dead volume connection. Tubing is color-coded to identify i.d. It is the ideal choice for plumbing capillary and micro LC systems where conventional 1/16" or 1/32" fittings are used.



PEEKsil™ Tubing Specifications	
Material:	Fused Silica-Lined PEEK
Maximum Temperature:	100°C
Typical Use:	Plumbing Capillary LC Systems
Maximum Pressure:	15,000psig

PEEKsil™ Tubing, 1/16 o.d.

Color	i.d. (mm)	Length			
		10cm 5/pk Part No.	15cm 5/pk Part No.	20cm 5/pk Part No.	50cm 2/pk Part No.
Orange	0.025	226	227	228	229
Natural	0.050	252	254	253	250
Black	0.075	291	292	293	294
Red	0.100	302	304	303	300
Purple	0.150	231	232	233	234
Yellow	0.175	352	354	353	350
Blue	0.200	403	406	404	401
Grey	0.300	416	417	418	419

Fused Silica Capillary Tubing

- Tight size tolerances for maximum reproducibility
- Easy to cut to desired length



High quality fused silica tubing is commonly used to plumb capillary LC systems due to the size availability and extremely tight tolerances. All tubing below has 360µm outer diameter.

Fused Silica Capillary Tubing Specifications	
Material:	Polyimide-Coated Fused Silica
Maximum Temperature:	350°C
Maximum Pressure:	Limited by connection system
Typical Use:	Plumbing Capillary LC Systems

Fused Silica Capillary Tubing

i.d. (mm)	1 meter Part No.	15 meter Part No.
0.025	991100	—
0.050	602035	—
0.100	602036	—
0.180	19603	602014*
0.250	602600	602615
0.320	603600	603615
0.450	19602	—

*Length for 0.180mm is 10 meter.

Micro-Tubing

- Consistent square cut for low volume connections



Use micro-tubing for connecting fused silica capillaries to ensure proper low volume connections with your micro LC applications.



Micro Tubing

Color	Reduction	Part No.
Red	1/16" to 127µm o.d.	3109278
Yellow	1/16" to 178µm o.d.	3109280
Natural	1/16" to 229µm o.d.	3109282
Blue	1/16" to 280µm o.d.	3109283
Orange	1/16" to 330µm o.d.	3109284
Red	1/16" to 360µm o.d.	3109299
Green	1/16" to 380µm o.d.	3109285
Black	1/16" to 457µm o.d.	3109286
Natural	1/16" to 533µm o.d.	3109287

Tubing Cutters



Rotary Tubing Cutter

- Cuts 1/32" to 1/8" o.d. tubing burr-free
- Leaves tubing i.d. open
- Works with metal and glass-lined tubing



Heavy-duty Tubing Cutter

- Inexpensive, well-built tool
- Cuts 1/8" to 1-1/8" o.d. tubing
- Works with metal tubing



Plier-type Tubing Cutters

- Cuts 1/16" o.d. tubing
- Ideal for cutting tubing in tight places
- Cuts metal or plastic tubing



Ceramic Fused Silica Cutter

- Cleanly cuts fused silica tubing
- Small enough to keep handy in your pocket
- Just score and snap



Electric Tubing Cutter

- Cut 1/16", 1/8", and 1/4" o.d. tubings with internal diameters as small as 0.008"
- Requires no lubricant or cutting fluid
- Assures square and burr-free cuts



Clean-cut Tubing Cutter

- Use with PTFE, Tefzel®, Polyolefin, PEEK
- Make clean, square cuts without deforming inner diameters
- Cuts 1/32" to 1/8" o.d.



Plastic Tubing Cutter

- Ideal for PEEK, Tefzel®, and other plastic tubing
- Cuts any size up to 1/4" o.d.



Tubing Cutters

Description	Qty.	Part No.
<i>Rotary Tubing Cutter</i>	ea	3165
Replacement Cutting Wheels	3	3167
<i>Heavy-Duty Tubing Cutter</i>	ea	13995
Replacement Cutting Wheels	3	13981
<i>Plier-Type Tubing Cutter</i>	ea	3169
<i>Ceramic Fused Silica Cutter</i>	5	3194
<i>Electric Tubing Cutter 110–120/220–240VAC, 50/60Hz</i>	ea	10-0200
<i>Replacement Parts and Accessories</i>		
Dressing Tool for 1/8" and 1/4" o.d. Tubing	ea	10-0118
Replacement Cutting Wheels	3	10-0124
Replacement Dressing Tool for 1/16" o.d. Tubing	ea	10-0116
<i>Clean-Cut™ Tubing Cutter</i>	ea	35902
Replacement Blade	ea	35903
<i>Plastic Tubing Cutter</i>	ea	3206
Replacement Blade	ea	3214

Tubing Accessories

Flex-wrap Tubing

- Holds parallel tubing or wiring together
- Ideal for gradient pumps or purging-gas lines
- Chemically inert 100% PTFE



Flex-Wrap Tubing

Color	1/8"–1/2" Part No.	3/16"–1" Part No.	1/4"–2" Part No.
Blue	35913	35923	35933
Orange	35914	35924	35934
Black	35916	35926	35936
White	35917	35927	35937

Cable Turtles

- Neat, easy way to organize messy cables
- Patented "Turtle" stores and conceals excess cords



Flexible rubber cup opens to let you coil extra cables, cords, tubing, or wires. Small Cable Turtle will holds up to 1 meter of standard appliance cord, and 3 meters of telephone wire. Large Cable Turtle holds up to 1 meter of thick instrument cord, 2 meters of standard appliance cord, or 6 meters of telephone wire.

Cable Turtles

Description	Qty.	Part No.
<i>Small</i>		
Red	5/pk	5274
Blue	5/pk	5276
Black	5/pk	5278
Grey	5/pk	5280
<i>Large</i>		
Red	4/pk	5282
Blue	4/pk	5284
Black	4/pk	5286
Grey	4/pk	5288